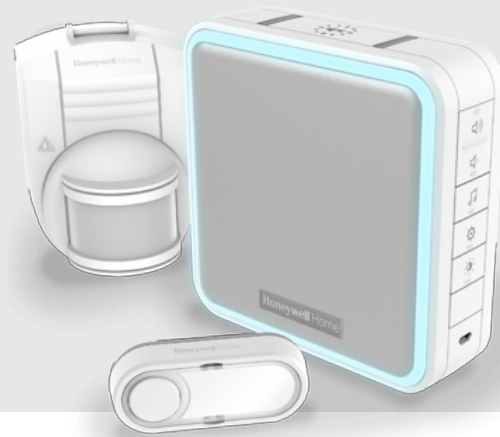


Data Sheet Series 9 DC915SEA

Wireless portable doorbell with range extender, wireless motion sensor and push button ? White



Pack Contents:

1 x Wireless Portable Doorbell, 1 x Wireless Push Button, 1 x Wireless Motion Sensor, 1 x CR2032 (3V) Battery, 1 x Quick Start Guide, 1 x Safety & Guarantee, 1 x Declaration of Conformity,

Key Features and Benefits:

Never miss a visitor or delivery - Place your portable doorbell anywhere in your home, with Honeywell ActivLink? technology providing a reliable wireless range of up to 200m, while the maximum volume of 90dB can be heard up to 100m away. Link two doorbells together to boost your range up to 400m.

Disturbance Free - With adjustable volume and innovative Sleep/Mute mode, which mutes the doorbell indefinitely, or for a prescribed period of 3, 6, 9 or 12 hours, your family can relax free from disturbances during movie nights or nap times.

Visual Alerts - The innovative Halo Light and LED Strobe provide discreet but effective visual alerts which complement your chosen melody in loud environments, or help to alert you when the doorbell can't be heard.

Revolutionary design - Compact and beautifully designed in a harmonising palette of white and grey, our doorbells are designed with your home in mind.

Peace of mind - Peace of mind for visitors, thanks to a LED confidence light on the push button, and peace of mind for you, thanks to the Secret Knock function which plays a different melody, so you know if it's a family member or friend at the door. For total peace of mind, let Honeywell ActivLink? interconnect your doorbell with Honeywell security accessories and Home Alarm Kits to build your own bespoke home alert and alarm system.

Reliability and Quality - Honeywell ActivLink®, using the 868MHz frequency, is our innovative wireless protocol which delivers greater range capability, extended battery life of up to 5 years, and improved connection reliability, all supported by our 2 year product quality guarantee.

Specification:

Wireless Portable Doorbell

Colour	White
Wall mounted	Optional
Frequency / Transmission Power / Wireless Range*	868MHz/200m
Audible Range (Volume)	100m (90dB)
Melodies	11
Sound	Volume Control/Sleep Mode and Mute/Internal Siren
Alarm Time (minutes)	2 (Internal Siren Mode)
Visual Alerts	8 Colour Halo/LED Strobe
Halo Colours	Red, Green, Blue, Cyan, Magenta, Yellow, White, Amber
Power	Battery: 4 x LR14 (C) 1.5V - /(not included)
Battery Life (Years)	5
Battery Features	Low Battery Indicator/Easy Open Battery Compartment
Mains Power via Micro USB	Optional external supply USB 5V 500mA
Maximum Device Capacity	6 x Wireless Push Button/Wireless Motion Sensor/Wireless Door and Window Sensor
Factory Reset	Yes
Operating Temperature/Storage Temperature	0°C to +40°C/-20°C to +60°C
Dimensions (mm) / Weight (g)	126 (h) x 126 (w) x 41.8 (d) / 264 (g)
Fixings	Brackets/Rawl Plugs/Screws

Wireless Push Button

Colour	White
Wall mounted	Optional
Screwless mounting option (Sticky pads)	Yes
Frequency / Transmission Power / Wireless Range*	868MHz/200m
Visual Alerts	Confidence Light
Power	Battery: 1 x CR2032 (3V) - /(included)
Battery Life (Years)	2
Battery Features	Low Battery Indicator/Easy Open Battery Compartment
Push Button Design	Offset Landscape
Push Name Plate	Yes
IP Rating	IP55
Operating Temperature/Storage Temperature	-20°C to +50°C/-20°C to +60°C
Dimensions (mm) / Weight (g)	30 (h) x 70 (w) x 16 (d) / 23.5 (g)
Fixings	Brackets/Screws/Sticky Pads

Wireless Motion Sensor

Colour	White
Wall mounted	Yes
Frequency / Transmission Power / Wireless Range*	868MHz/150m
Power	Battery: 1 x 9V PP3 (6LR61) - /(not included)
Battery Life (Years)	1
Battery Features	Low Battery Indicator/Easy Open Battery Compartment
Detection Range / Angle	12m/140°
Test Mode	Yes
Tamper Protection	Yes
IP Rating	IP54
Operating Temperature/Storage Temperature	-10°C to +35°C/-20°C to +60°C
Dimensions (mm) / Weight (g)	111 (h) x 73 (w) x 93 (d) / 152 (g)
Fixings	Rawl Plugs/Screws

Pack

EAN Code	5004100965264
Pack Dimensions (mm) / Weight (g)	216 (h) x 315 (w) x 87 (d)
Standard Pack Quantity	4

* Measured in open field conditions, walls, ceilings and metal structures will reduce the maximum range.

©2020 Resideo Technologies, Inc. The Honeywell Home trademark is used under license from Honeywell International Inc.