



V330

MARS Series Lockshield Valves

For the return port of radiators, external threads

APPLICATION

MARS Series lockshield valves are used to connect radiators and other heat exchangers to heating circuits of hydronic heating systems. They are installed at the return port of the radiator and offer a shut-off function to separate the radiator from the heating circuit, for example for renovating.

FEATURES

- With shut-off function for easy removal of connected radiator
- Connection to all types of pipework DN10 to DN15
- Tailpiece with integrated EPDM O-ring

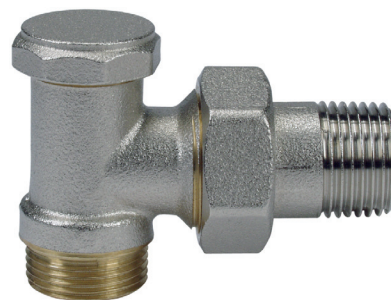
SPECIFICATIONS

Medium:	Heating water, quality to VDI 2035
pH-value:	8 - 9.5
Max. operating temperature:	120°C (248°F)
Operating pressure:	PN10
Max. differential pressure:	0.20 bar (2.9 psi) recommended for quiet operation

DESIGN

The lockshield valves consist of:

- Valve housing PN10, DN10 or DN15 with
 - external thread connection M22x1.5 to ISO 965-1 on inlet
 - external thread connection with union-nut and radiator tailpiece on outlet
- Valve insert
- Protection cap
- Union-nut and radiator tailpiece



MATERIALS

- Valve housing made of nickel-plated brass
- Valve insert made of brass with EPDM O-rings, soft seals and stainless steel spindle
- Protection cap made of grey plastic
- Union-nut and tailpiece made of nickel plated brass with EPDM O-ring

DIMENSIONS AND ORDERING INFORMATION

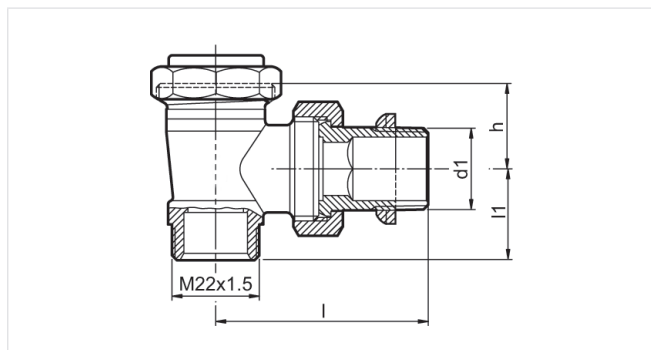


Fig. 1. Angle version

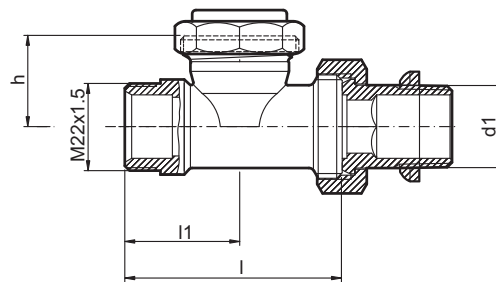



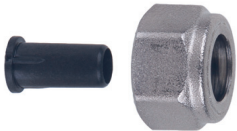
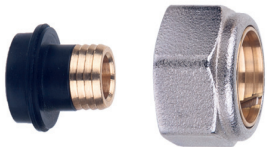
Fig. 2. Straight version

Tab. 1 Available versions and OS-Nos (OS=Ordering Specification)

Versions	DN	Dimensions					OS-No.
		d1	d2	l1	l	h	
Angle (Fig. 1)	10	Rp 3/8"	-	20	49	21.5	V330E010
	15	Rp 1/2"	-	23	53	21.5	V330E015
Straight (Fig. 2)	10	Rp 3/8"	-	25	75	23	V330D010
	15	Rp 1/2"	-	29	82	23	V330D015

Note: All dimensions in mm unless stated otherwise.

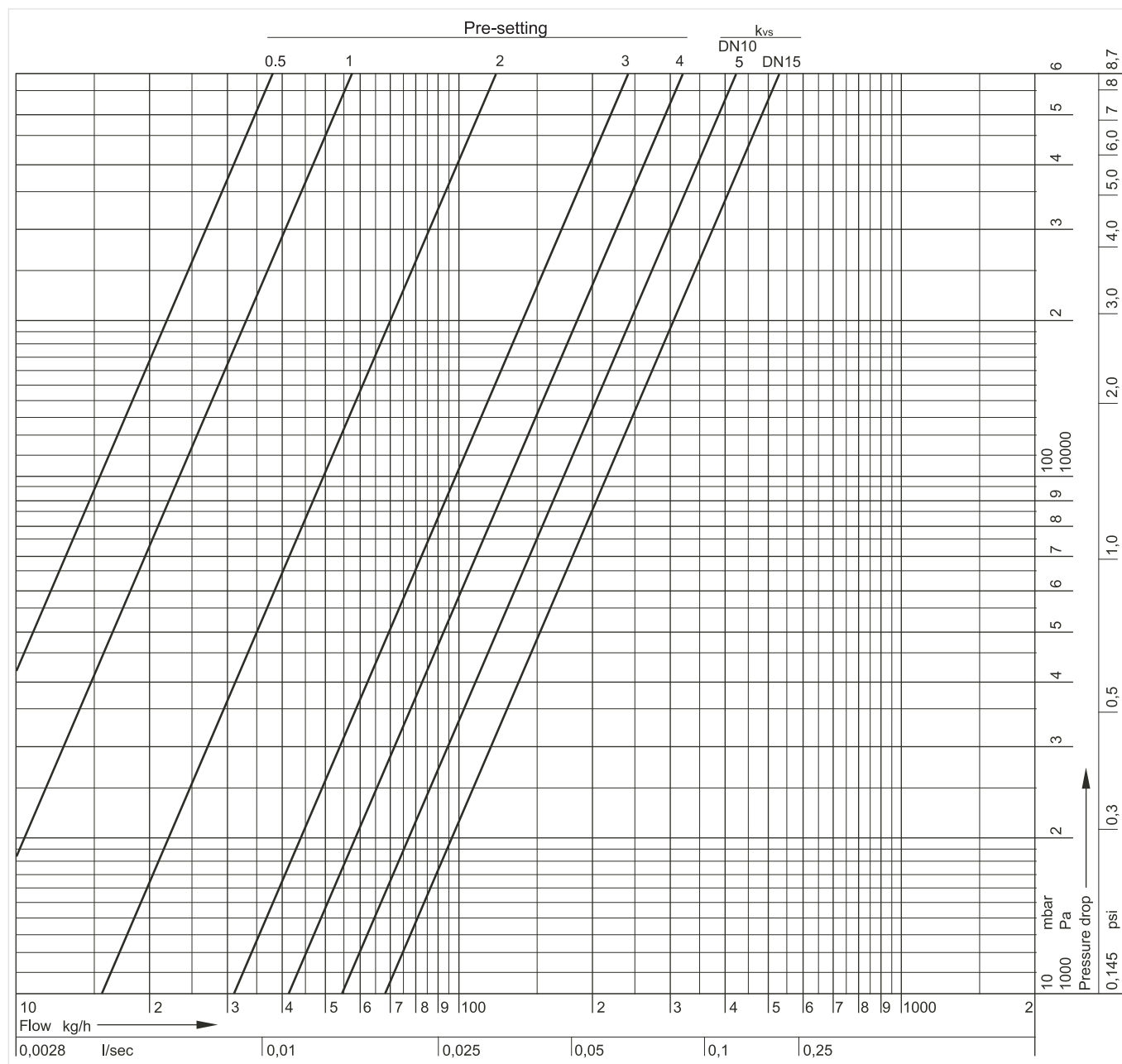
ACCESSORIES

	Description	Dimension	Part No.
	FEM22CS	Compression fitting for COPPER and STEEL pipe	
	Consisting of one-piece (preassembled) nut. Soft sealing connection. For valves with external thread M22x1.5 to ISO 965-1.		
	Note: Reinforcing insert for copper or soft steel pipe with 1.0 mm wall thickness not required. Max. operating temperature 90 °C, max. operating pressure 10 bar.		
	M22 x 1.5, 1 pcs.	10 mm	FEM22CS10
	M22 x 1.5, 1 pcs.	12 mm	FEM22CS12
	M22 x 1.5, 10 pcs.	12 mm	FEM22CS12-10
	M22 x 1.5, 1 pcs.	14 mm	FEM22CS14
	M22 x 1.5, 10 pcs.	14 mm	FEM22CS14-10
	M22 x 1.5, 1 pcs.	15 mm	FEM22CS15
M22 x 1.5, 10 pcs.	15 mm	FEM22CS15-10	
M22 x 1.5, 1 pcs.	16 mm	FEM22CS16	
	FEM22P	Compression fitting for PEX pipe.	
	Consisting of one-piece (preassembled) nut and reinforcing insert. Soft sealing connection. For valves with external thread M22x1.5 to ISO 965-1.		
	Note: Max. operating temperature 90 °C, max. operating pressure 10 bar.		
	M22x1.5, 1 pcs.	12 x 1.1 mm	FEM22P12X1.1
	M22x1.5, 1 pcs.	16 x 1.5 mm	FEM22P16X1.5
	FEM22PM	Compression fitting for PEX and MULTILAYER pipe.	
	Consisting of one-piece nut with preassembled compression ring and one-piece reinforcing insert. For valves with external thread M22x1.5 to ISO 965-1.		
	Note: Max. operating temperature 90°C, max. operating pressure 10 bar.		
	M22x1.5, 1 pcs.	14 x 2 mm	FEM22PM14X2
	M22x1.5, 1 pcs.	16 x 2 mm	FEM22PM16X2
	M22x1.5, 10 pcs.	16 x 2 mm	FEM22PM16X2-10
M22x1.5, 1 pcs.	16 x 2.25 mm	FEM22PM16X2.25	

PLEASE NOTE:

- To avoid stone deposit and corrosion the composition of the medium should conform with VDI-Guideline 2035
- Additives have to be suitable for EPDM sealings
- System has to be flushed thoroughly before initial operation with all valves fully open
- Any complaints or costs resulting from non-compliance with above rules will not be accepted by Honeywell Home
- Please contact us if you should have any special requirements or needs

FLOW DIAGRAM



For more information

homecomfort.resideo.com/europe



Ademco 1 GmbH
Hardhofweg 40
74821 MOSBACH
GERMANY
Phone: +49 6261 810
Fax: +49 6261 81309

Manufactured for and on behalf of the
Pittway Sàrl, La Pièce 4, 1180 Rolle, Switzerland
by its Authorised Representative Ademco 1 GmbH
EN0H-2204GE25 R0520

Subject to change

© 2020 Pittway Sàrl. All rights reserved.

This document contains proprietary information of Pittway Sàrl and its affiliated companies and is protected by copyright and other international laws. Reproduction or improper use without specific written authorisation of Pittway Sàrl is strictly forbidden. The Honeywell Home trademark is used under license from Honeywell International Inc.

Honeywell Home