



V2480 – Verafix Design

Design Lockshield Valve
with High Quality Surface for Design Radiators

APPLICATION

The V2480 Verafix Design lockshields have a high-class appearance to match design radiators.

Verafix Design lockshield valves are used to connect radiators and other heat exchangers to heating circuits of hydronic heating systems. They are installed at the return port of the radiator and offer a shut-off function to separate the radiator from the heating circuit, for example for renovating.

FEATURES

- Perfect finishing with high quality surface in chrome, white (RAL 9016) or matt black (RAL 9004)
- Available in angled, straight and double angle pattern
- Including a chromed tail piece with integrated O-ring
- Presettable
- Connections for all types of pipework available

Angled



Straight



Double angle left



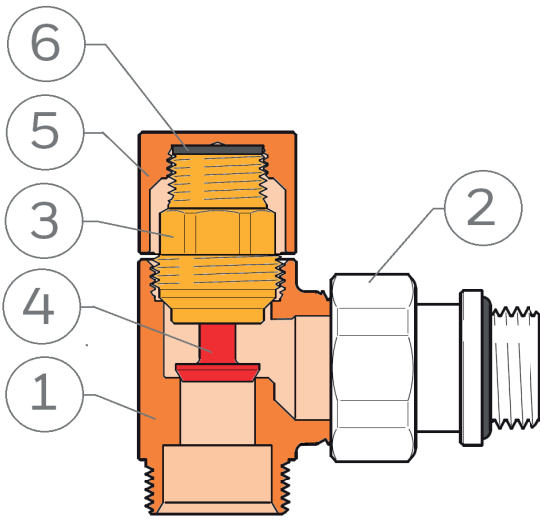
Double angle right



SPECIFICATIONS

Medium:	Water or glycol-water mixture, according to VDI 2035
pH-value:	8 - 9.5
Operating temperature:	2 - 100°C
Operating pressure:	PN10
Max. differential pressure:	100 kPa (1 bar, 14.5 psi) 20 kPa (0.2 bar, 2.9 psi) recommended for quiet operation
k _{VS} -value:	1.18

CONSTRUCTION

Overview	Components	Materials
	1 Valve body	Brass
	2 Radiator connection tailpiece with coupling nut and O-Ring seals	
	3 Insert cartridge with o-ring seal for the axis	
	4 Plunger	
	5 Protection cap	EPDM 70 o-rings
	6 Secondary sealing	
		Fibre

METHOD OF OPERATION

The Verafix Design connects the return of a radiator or heat exchanger to the heating loop and has the functions regulation and shut-off.

Regulation:

The flow can be regulated by opening the valve insert to a certain value derived from the flow diagram. By presetting, the opening between the plunger and the valve seat is reduced. In this way the flow is throttled. The Verafix Design is supplied set fully open.

Shut-off:

The return of the radiator can be shut-off by closing the valve insert.

TRANSPORTATION AND STORAGE

Keep parts in their original packaging and unpack them shortly before use.

The following parameters apply during transportation and storage:

Parameter	Value
Environment:	clean, dry and dust free
Min. ambient temperature:	0 °C
Max. ambient temperature:	50 °C
Max. ambient relative humidity:	75 % *

*non condensing

INSTALLATION GUIDELINES

Setup requirements

- To avoid stone deposit and corrosion the composition of the medium should conform with VDI-Guideline 2035
- Additives have to be suitable for EPDM sealings
- System has to be flushed thoroughly before initial operation with all valves fully open
- Any complaints or costs resulting from non-compliance with above rules will not be accepted by Resideo

APPLICATION EXAMPLES

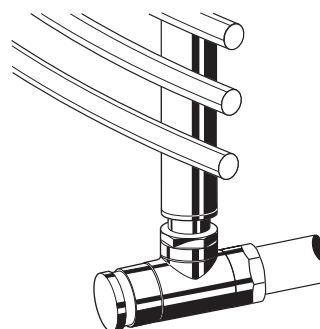


Fig. 1 Angled version

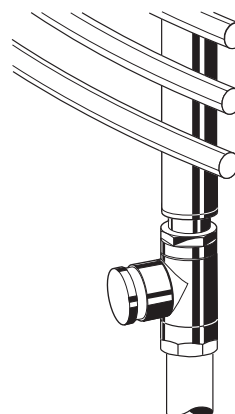


Fig. 2 Straight version

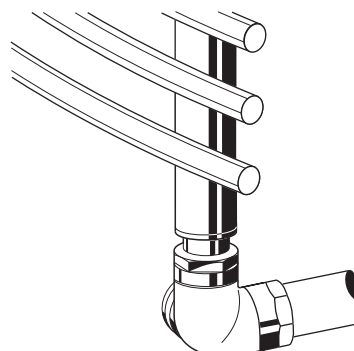
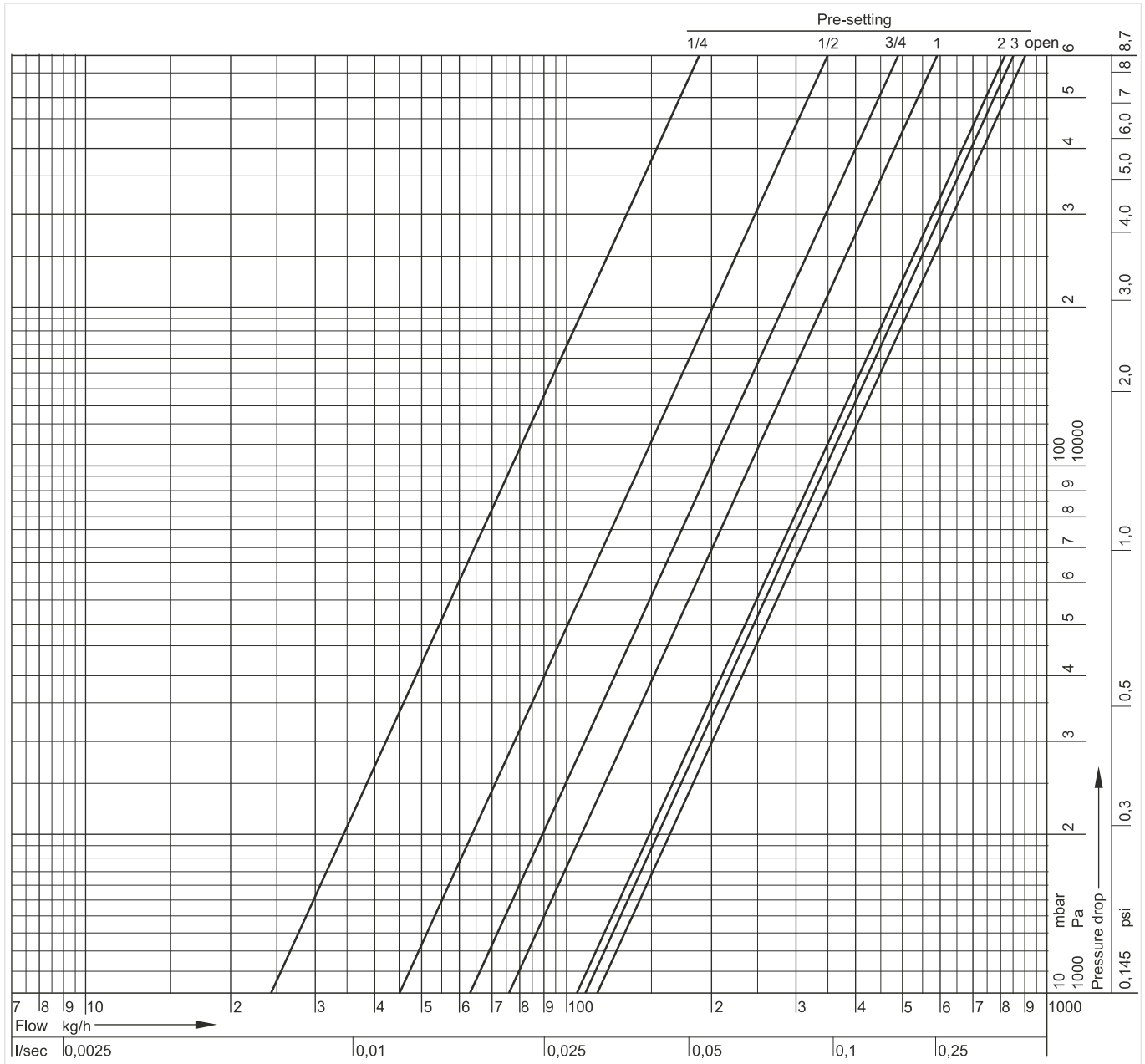


Fig. 3 Double angle version

TECHNICAL CHARACTERISTICS

Flow Diagram



Turns of presetting screw	1/4	1/2	3/4	1	2	3	k _{VS} = open
k _V -value	0.24	0.45	0.63	0.76	1.12	1.16	1.18

DIMENSIONS AND ORDERING INFORMATION

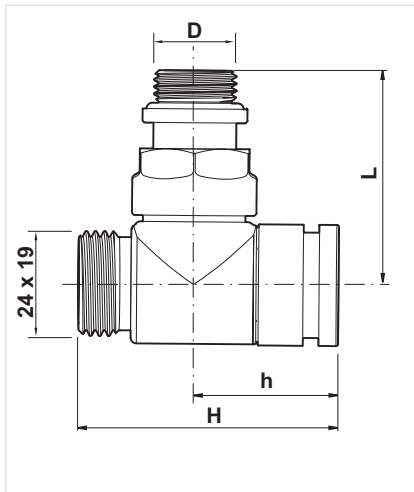


Fig. 4. Angle

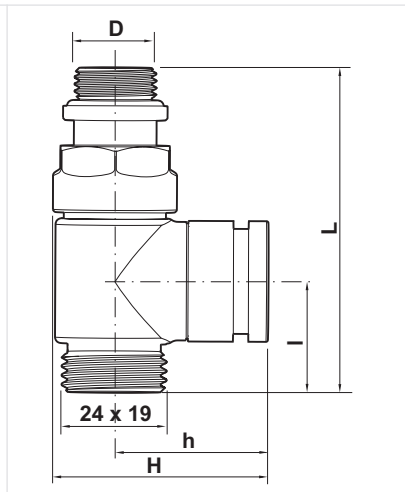


Fig. 5. Straight

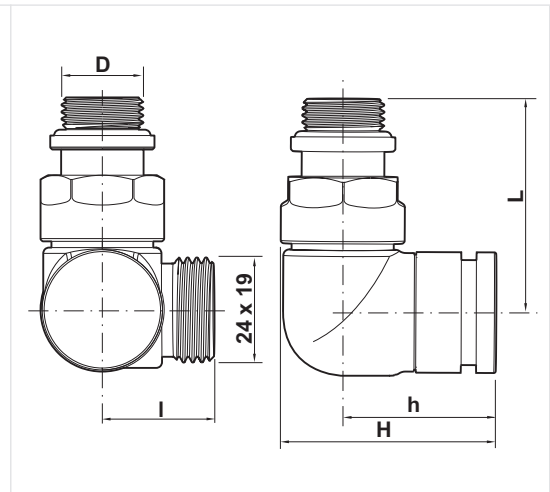


Fig. 6. Double angle

Body type	DN	k _{vs} -value	l	L	h	H	D	OS-No.
White, angle	15	1.18	-	55	37	63	Rp 1/2"	V2481E0015A
Chrome, angle	15	1.18	-	55	37	63	Rp 1/2"	V2482E0015A
Matt black, angle	15	1.18	-	55	37	63	Rp 1/2"	V2483E0015A
White, straight	15	1.18	26	81	40	55	Rp 1/2"	V2481D0015A
Chrome, straight	15	1.18	26	81	40	55	Rp 1/2"	V2482D0015A
Matt black, straight	15	1.18	26	81	40	55	Rp 1/2"	V2483D0015A
White, double angle right	15	1.18	26	55	40	56	Rp 1/2"	V2481R0015A
Chrome, double angle right	15	1.18	26	55	40	56	Rp 1/2"	V2482R0015A
Matt black, double angle right	15	1.18	26	55	40	56	Rp 1/2"	V2483R0015A
White, double angle left	15	1.18	26	55	40	56	Rp 1/2"	V2481L0015A
Chrome, double angle left	15	1.18	26	55	40	56	Rp 1/2"	V2482L0015A
Matt black, double angle left	15	1.18	26	55	40	56	Rp 1/2"	V2483L0015A

Note: All dimensions in mm unless stated otherwise.

ACCESSORIES

	Description	Dimension	Part No.
	FEM24C Pipe Connections Design compression fitting for COPPER pipe. Consisting of compression nut and compression ring. For valves with external thread M24x19. (1 pack)		
		12 mm	FEM24C12
		14 mm	FEM24C14
		15 mm	FEM24C15
		16 mm	FEM24C16
	FEM24P Pipe Connections Design compression fitting for PEX pipe. Consisting of compression nut, compression ring and reinforcing insert. For valves with external thread M24x19. (1 pack)		
		12 x 1.1 mm	FEM24P12X1.1
		14 x 2 mm	FEM24P14X2
		16 x 1.5 mm	FEM24P16X1.5
		16 x 2 mm	FEM24P16X2
		18 x 2 mm	FEM24P18X2
	FEM24M Pipe Connections Design compression fitting for MULTILAYER pipe. Consisting of compression nut, compression ring and reinforcing insert. For valves with external thread M24x19. (1 pack)		
		12 x 2 mm	FEM24M14X2.1
		16 x 2 mm	FEM24M16X2
		18 x 2 mm	FEM24M18X2
		20 x 2 mm	FEM24M20X2
	VA2201D Rosette white (RAL9016) for wall covering		
		Ø 40 x 12 mm	VA2201D012
		Ø 40 x 14 mm	VA2201D014
		Ø 40 x 15 mm	VA2201D015
		Ø 40 x 16 mm	VA2201D016
		Ø 40 x 18 mm	VA2201D018
		Ø 40 x 20 mm	VA2201D020
	VA2201E Rosette chrome for wall covering		
		Ø 40 x 12 mm	VA2201E012
		Ø 40 x 14 mm	VA2201E014
		Ø 40 x 15 mm	VA2201E015
		Ø 40 x 16 mm	VA2201E016
		Ø 40 x 18 mm	VA2201E018
		Ø 40 x 20 mm	VA2201E020

For more information

homecomfort.resideo.com/europe



Ademco 1 GmbH
Hardhofweg 40
74821 MOSBACH
GERMANY
Phone: +49 6261 810
Fax: +49 6261 81309

Manufactured for and on behalf of the
Pittway Sàrl, La Pièce 4, 1180 Rolle, Switzerland
by its Authorised Representative Ademco 1 GmbH
ENOH-2109GE25 R0121

Subject to change

© 2021 Pittway Sàrl. All rights reserved.

This document contains proprietary information of
Pittway Sàrl and its affiliated companies and is
protected by copyright and other international laws.
Reproduction or improper use without specific
written authorisation of Pittway Sàrl is strictly
forbidden. The Honeywell Home trademark is used
under license from Honeywell International Inc.

Honeywell Home