



Braukmann Alwa-Comfort

Throttle valve for floor circulation systems

APPLICATION

Alwa-Comfort is used as floor throttle valve for hydraulic balancing in warm-water circulation systems. Due to the minimal volume flow of $< 0.1 \text{ m}^3/\text{h}$, Alwa-Comfort valves can be used in floor lines and other smaller circulation circuits.

These applications are found in particular wherever more stringent hygienic requirements apply or for reasons of comfort, hot water must be available immediately upon opening an extraction point.

To implement hydraulic balancing, the valve is preset to a fixed temperature. The throttle valve opens and closes independently, regulating the flow as a function of water temperature in the floor circulation line.

According to the specifications in DVGW worksheet W554, Alwa-Comfort supports thermal disinfection starting at a water temperature of 70°C .

APPROVALS

- DVGW

SPECIAL FEATURES

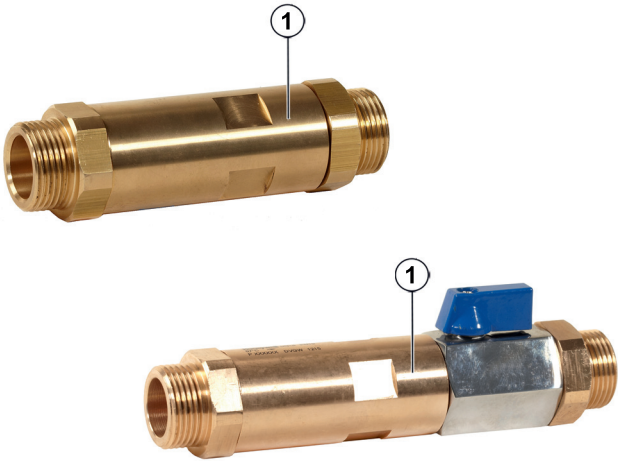
- DVGW certification according to W554
- All materials in contact with drinking water according to European directives
- For regulation according to DVGW worksheets W551 and W553
- Precise regulation of the volume flow with patented bypass function
- Valve housing and all parts with flow-contact made of corrosion-resistant red bronze
- Cavitation-free due to plastic valve insert
- Small installation size due to inline design
- High control accuracy due to arrangement of thermocouple in the medium
- Hydraulic balancing also during thermal disinfection
- Shut-off function is outside the valve
- Robust design



TECHNICAL DATA

Media	
Medium:	Water
Connections/Sizes	
Connection size:	DN15
Pressure values	
Max. operating pressure:	10 bar
Max. kv.min - value	$0.1 \text{ m}^3/\text{h}$
Min. kv.max - value	$0.6 \text{ m}^3/\text{h}$
kv.TD - value	$\leq 0.1 \text{ m}^3/\text{h}$
Operating temperatures	
Max. operating temperature medium:	90°C

CONSTRUCTION

Overview		Components	Materials
	1	Valve housing in straight pattern with internal threads or external threads	Red bronze
	Not depicted components:		
		Internally located thermocouple	Red bronze
		Regulating cone	Fortron
		Ball valve	Stainless steel
		Springs	Spring steel
		O-rings	EPDM

METHOD OF OPERATION

Alwa-Comfort is used as flow throttle valve to limit the flow of domestic hot water circulation systems.

This is performed automatically with the preset water temperature. The valve is set to the desired water temperature and the thermocouple keeps this temperature constant at the valve.

When the temperature drops, the valve opens so that hot water can flow. When the temperature rises, the valve closes (down to a minimum flow rate) once the desired temperature is obtained. There is permanent regulation of the water temperature, thus ensuring optimal supply of floor lines with the lowest possible use of energy.

Alwa-Comfort supports thermal disinfection starting at a water temperature of 70 °C according to DVGW worksheet W554.

TRANSPORTATION AND STORAGE

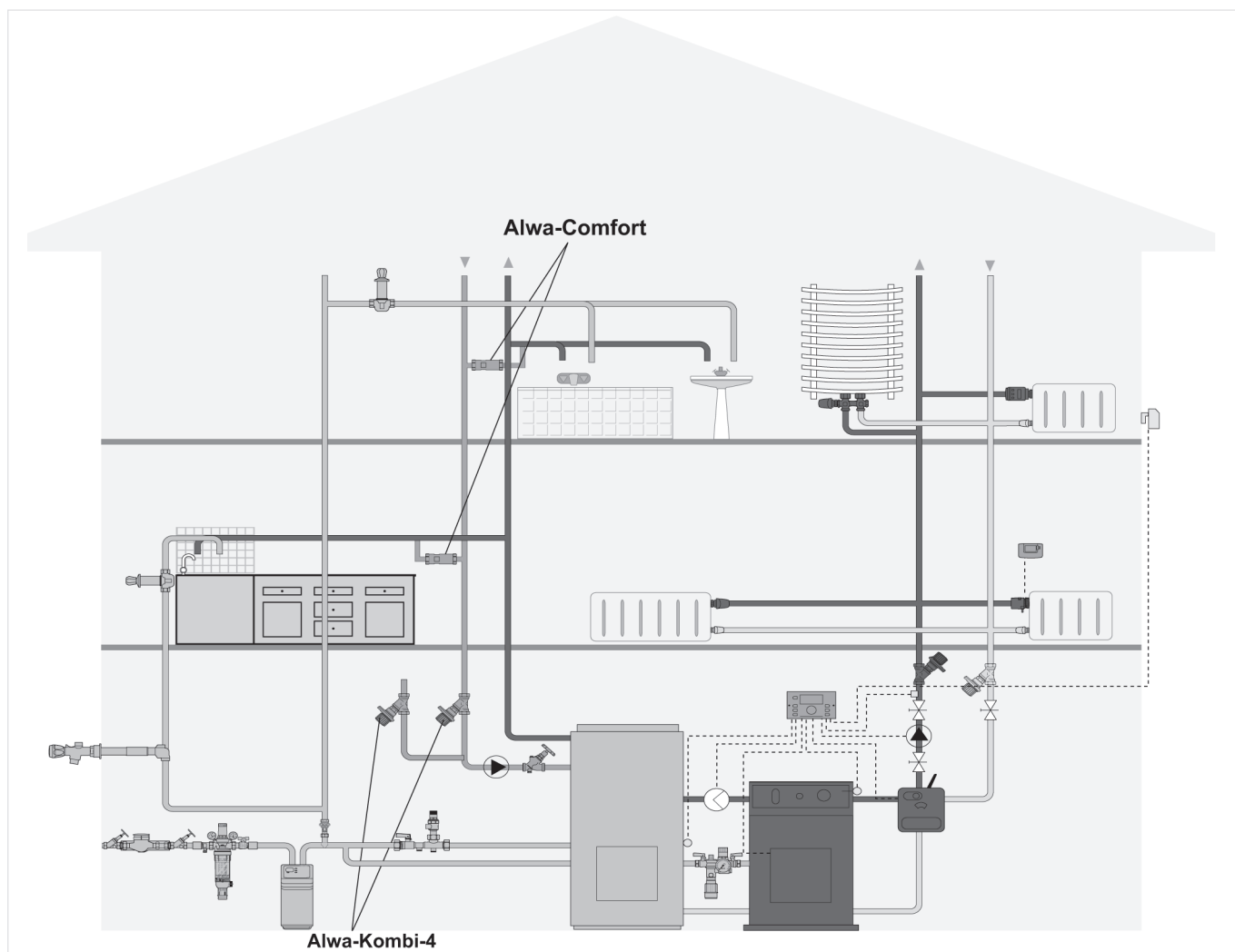
Keep parts in their original packaging and unpack them shortly before use.

The following parameters apply during transportation and storage:

Parameter	Value
Environment:	clean, dry and dust free, indoor use only

INSTALLATION GUIDELINES

Installation Example



TECHNICAL CHARACTERISTICS

Pressure drop characteristics

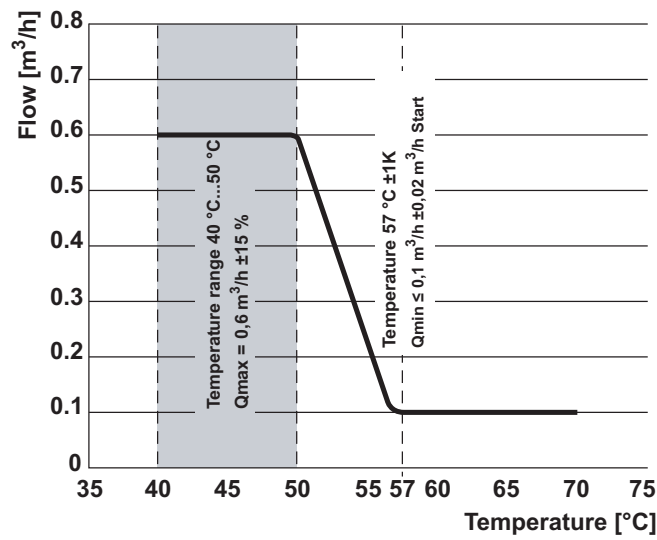


Fig. 1 Alwa-Comfort presetting 57 °C

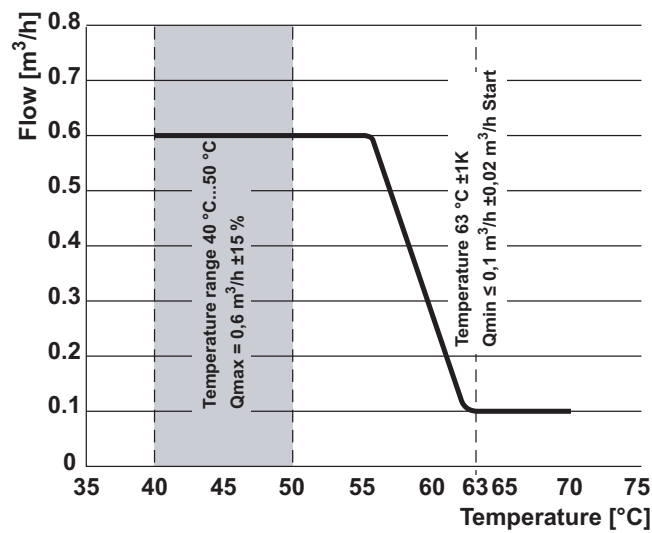
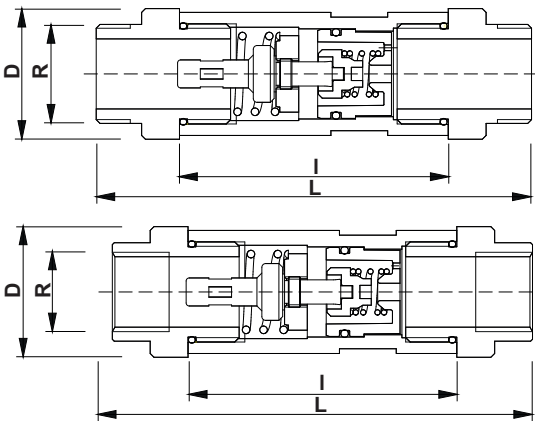


Fig. 2 Alwa-Comfort presetting 63 °C

DIMENSIONS

V1840...

Overview

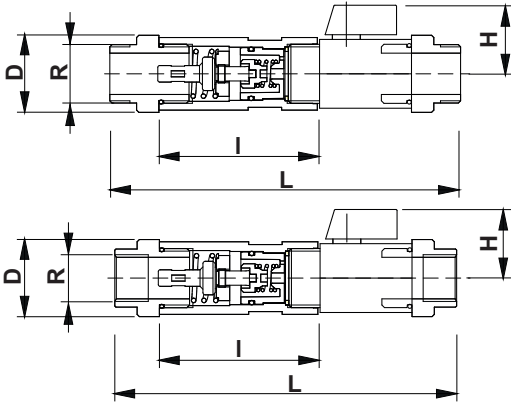


Parameter		Values			
		V1840X0015	V1840X0015H	V1840Y0015	V1840Y0015H
Dimensions:	R	G ³ / ₄ "		Rp ¹ / ₂ "	
	D	max. 34.5		max. 34.5	
	l	71		71	
	L	115		111	

Note: All dimensions in mm unless stated otherwise.

V1850...

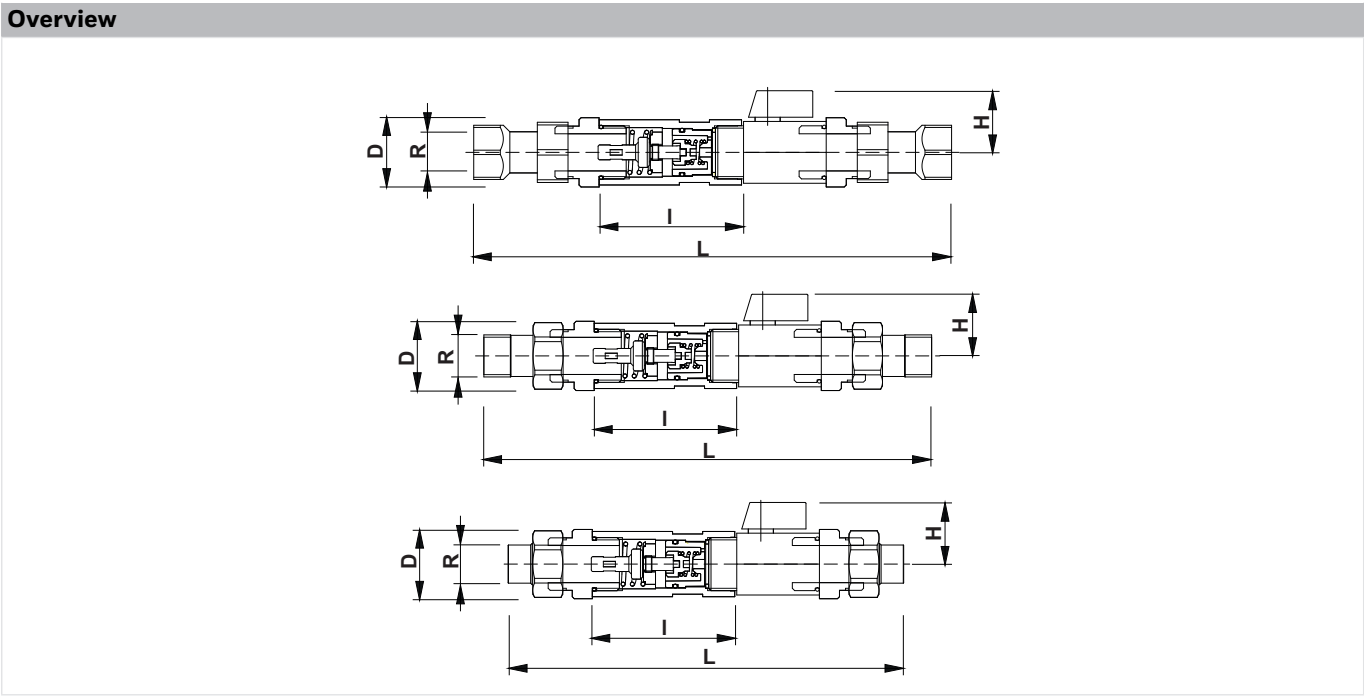
Overview



Parameter		Values			
		V1850X0015	V1850X0015H	V1850Y0015	V1850Y0015H
Dimensions:	R	G ³ / ₄ "		Rp ¹ / ₂ "	
	D	max. 34.5		max. 34.5	
	l	71		71	
	L	158		154	
	H	31		31	

Note: All dimensions in mm unless stated otherwise.

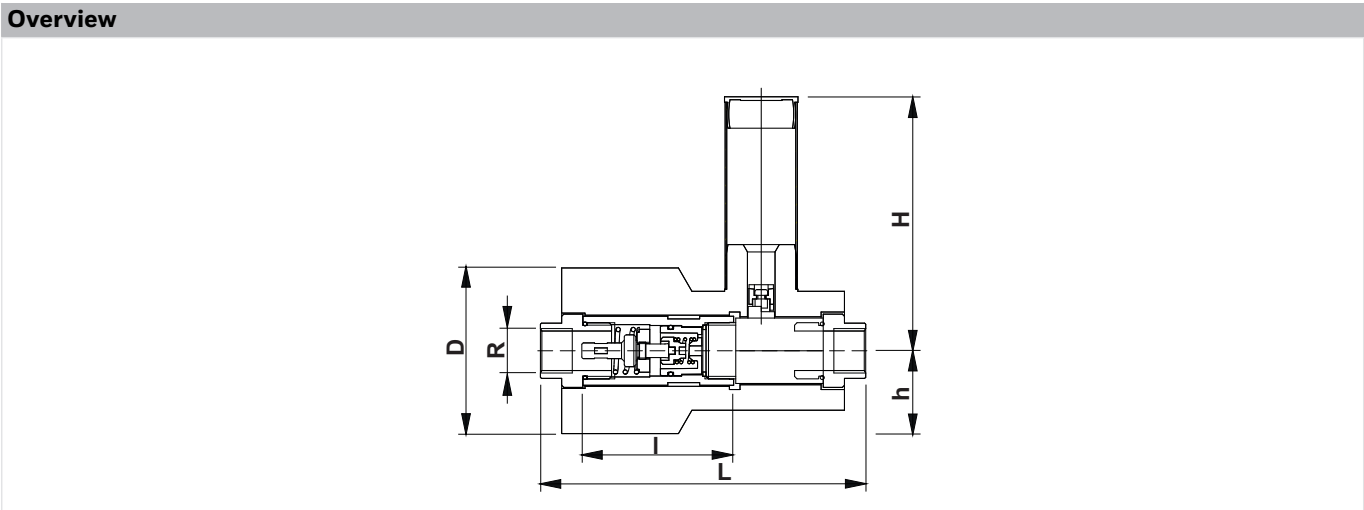
V1850...with nozzles



Parameter		Values					
		V1850XY015	V1850XY015H	V1850XX015	V1850XX015H	V1850XS015	V1850XS015H
Dimensions:	R	G ³ / ₄ "		Rp ¹ / ₂ "		19	
	D	max. 34.5		max. 34.5		max. 34.5	
	I	71		71		71	
	L	239		224		198	
	H	31		31		31	

Note: All dimensions in mm unless stated otherwise.

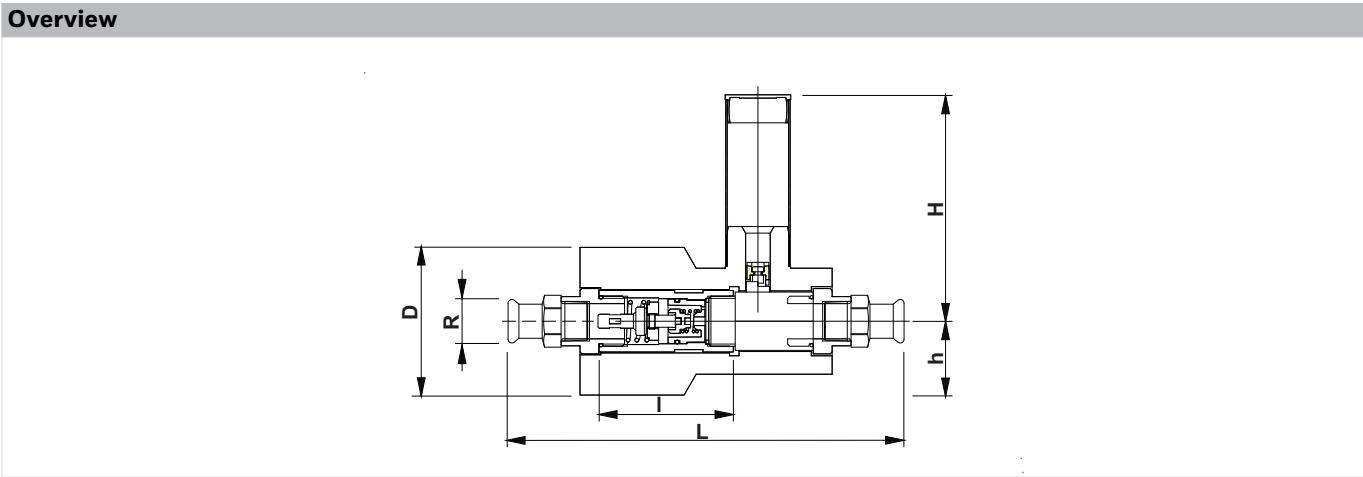
V1860...



Parameter		Values	
		V1860Y0015	V1860Y0015H
Dimensions:	R	Rp ¹ / ₂ "	
	D	78	
	l	71	
	L	154	
	H	120	
	h	39	

Note: All dimensions in mm unless stated otherwise.

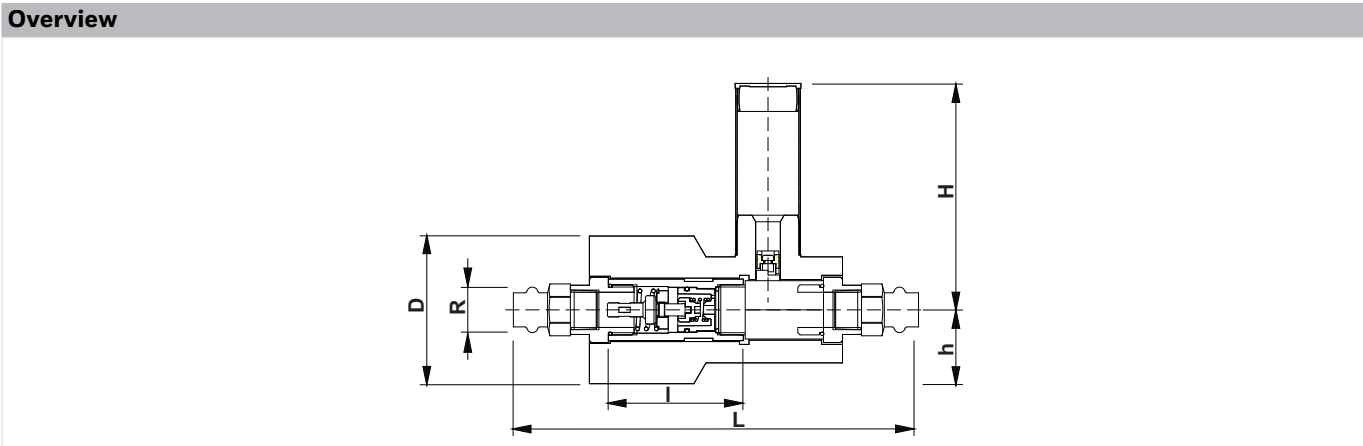
V1866...



Parameter		Values	
		V1866Y0015	V1866Y0015H
Dimensions:	R	MAPRESS	
	D	78	
	l	71	
	L	210	
	H	120	
	h	39	

Note: All dimensions in mm unless stated otherwise.

V1867...



Parameter		Values	
		V1867Y0015	V1867Y0015H
Dimensions:	R	SANPRESS	
	D	78	
	l	71	
	L	214	
	H	120	
	h	39	

Note: All dimensions in mm unless stated otherwise.

ORDERING INFORMATION

The following tables contain all the information you need to make an order of an item of your choice. When ordering, please always state the type, the ordering or the part number.

Options

Alwa-Comfort – on wall mounted versions

OS.-No.:	Presetting:	Connections:	with ball valve:
V1840X0015	57°C	External thread	-
V1840Y0015		Internal thread	-
V1850X0015		External thread	•
V1850Y0015		Internal thread	•
V1850XX0015		Threaded male connections	•
V1850XY0015		Threaded male connections	•
V1850XS0015		Soldered connection	•
V1840X0015H	63°C	External thread	-
V1840Y0015H		Internal thread	-
V1850X0015H		External thread	•
V1850Y0015H		Internal thread	•
V1850XX0015H		Threaded male connections	•
V1850XY0015H		Threaded male connections	•
V1850XS0015H		Soldered connection	•

Alwa-Comfort-UP – under wall mounted versions

OS.-No.:	Presetting:	Connections:	with ball valve:
V1860Y0015	57°C	Internal thread	•
V1866Y0015		MAPRESS	
V1867Y0015		SANRESS	
V1860Y0015H	63°C	Internal thread	
V1866Y0015H		MAPRESS	
V1867Y0015H		SANRESS	

Accessories

	Description	Dimension	Part No.
	VA7400 Union nut, sealing and red bronze tailpiece for external threads		
	DN15, for 15 mm pipe-Ø	DN15	VA7400A015
	DN15, for 16 mm pipe-Ø	DN15	VA7400A016
	VA7401 Union nut, sealing and externally threaded red bronze tailpiece for external threads		
		DN15	VA7401A015
	VA7402 Union nut, sealing and steel soldering tailpiece		
		DN15	VA7402A015
	VA7403 Union nut with Mapress-fitting for external threads		
	For pipe-Ø 15 mm	DN15	VA7403A015
	For pipe-Ø 18 mm	DN15	VA7403A018
	VA7404 Sanpress red bronze crimp fitting with sealing		
	For pipe-Ø 15 mm	DN15	VA7404A015
	For pipe-Ø 18 mm	DN15	VA7404A018
	VA7405 Union nut, sealing and internally threaded red bronze tailpiece		
		DN15	VA7405A015
	VA2510 Insulation shells		
		DN15	VA2510E015
	VA2610 Ball Valve		
		DN15	VA2610A015
	VA2410G Rosette		
		DN15	VA2410G015



Manufactured for
and on behalf of
Pittway Sàrl, Z.A., La Pièce 4,
1180 Rolle, Switzerland
by its authorised representative
Ademco 1 GmbH

For more information
homecomfort.resideo.com/europe

Ademco 1 GmbH, Hardhofweg 40,
74821 MOSBACH, GERMANY

Phone: +49 6261 810
Fax: +49 6261 81309