



# User Manual

TF228WN Digital Thermostat

Quick Start Guide

## Thermostat Appearance



## Operating Your Thermostat

Power On/Off

Time Off

Press to switch on/off thermostat. When in off mode, OFF icon will display.

Press could set the automatical turn off time when the thermostat is working.

Press and hold for more than 3s. After timer icon flashes, press or to set turn off time, then press button to exit.

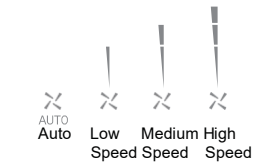
Temperature Setting

In or mode, press or to set the target room temperature.

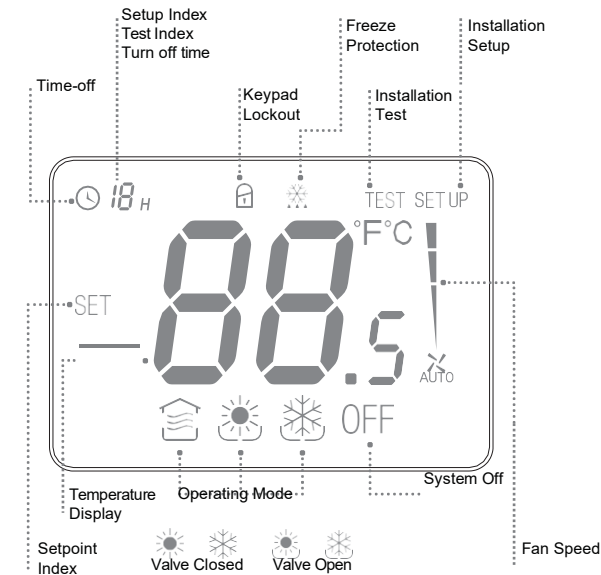
Operating Mode



Fan Speed



## LCD Display



## Trouble Shooting Tips

If....	Then....
Doesn't work	<ul style="list-style-type: none"> <li>Set the mode to  (heating mode) by press .</li> <li>Make sure the temperature is set above the room temperature.</li> <li>Make sure  shows on the display.</li> <li>Wait 5 minutes for the system to respond.</li> </ul>
Doesn't work	<ul style="list-style-type: none"> <li>Set the mode to  (cooling mode) by press .</li> <li>Make sure the temperature is set below the room temperature.</li> <li>Make sure  shows on the display.</li> <li>Wait 5 minutes for the system to respond.</li> </ul>
Doesn't work	<ul style="list-style-type: none"> <li>Make sure keypad is unlocked.</li> <li>Check that thermostat is on.</li> </ul>
Doesn't work	<ul style="list-style-type: none"> <li>Make sure keypad is unlocked.</li> <li>Make sure the system isn't in  mode.</li> <li>Check that thermostat is on.</li> </ul>
The system turns off automatically	<ul style="list-style-type: none"> <li>Make sure the memorized time off value isn't set to "0".</li> </ul>



resideo

[www.resideo.com](http://www.resideo.com)

Ademco 1 GmbH  
 Hardhofweg 40  
 74821 Mosbach  
 Phone: +49 1801 466 388  
[info.de@resideo.com](mailto:info.de@resideo.com)  
[homecomfort.resideo.com](http://homecomfort.resideo.com)

©2020 Resideo Technologies, Inc. All rights reserved. The Honeywell Home trademark is used under license from Honeywell International Inc. This product is manufactured by Resideo Technologies, Inc and its affiliates.

Honeywell Home

## Installation Guide

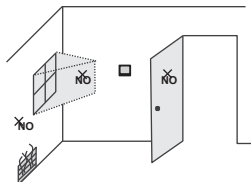
**Must be installed by a trained and experienced installer**

Read instruction carefully. Failure to follow instruction will damage the product or cause a hazardous condition.

**Caution: ELECTRICAL HAZARD can cause electrical shock or equipment damage. Disconnect power before installation, reparation and detachment.**

### Installation Tips

TF228WN is designed for standard 75x75x5mm wall mounting box installation. Install the thermostat about 5 feet (1.5m) above the floor in an area with good air circulation at average temperature.



**Do not install in locations where the thermostat can be affected by:**

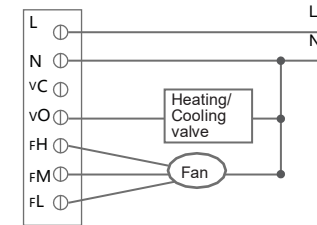
- Dead spots behind doors and in corners
- Hot or cold air from ducts
- Sunlight or radiant heat from appliances
- Concealed pipes or chimneys

## Terminal Designations

Terminal	Description
L	220VAC live wire
N	220VAC neutral wire
VC	Heating / Cooling valve close
VO	Heating / Cooling valve open
FH	High speed fan
FM	Medium speed fan
FL	Low speed fan

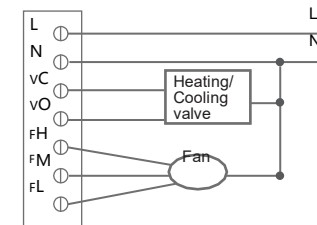
\* The temperature of mounting box and wall should be in the operating temperature range.

## Wiring Diagram 1



Honeywell Home VC4013/VN4013 VS4016 Wiring

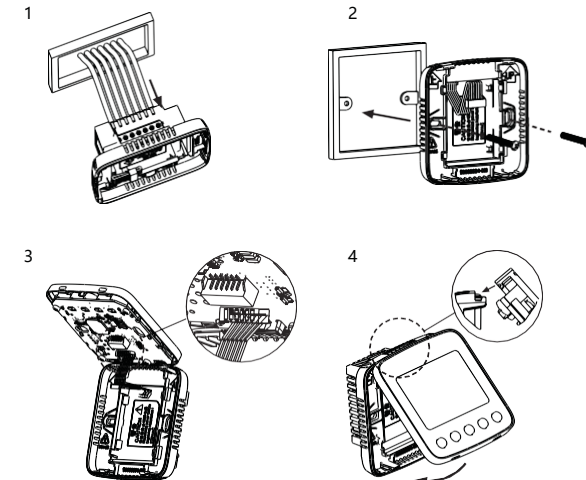
## Wiring Diagram 2





Honeywell Home VC6013/VN6013 Wiring

## Wiring and Installation

The screw must be locked tightly to avoid wire break off from the terminal.



## Installation Setup

3s  
 +  → Enter or Exit Installation Setup Mode

ISU Code	Description	Possible Options ^ v
1	System Type	0 Heat only 1 Cool only <b>2 Two pipes heating/cooling(Default)</b>
2	Temperature Scale	0 °F <b>1 °C (Default)</b>
3	Fan Control Type	0 Auto only 1 Constant only <b>2 Both(Default)</b>
4	CPH Value (heating)	1-12 <b>4(Default)</b>
5	CPH Value (cooling)	1-6 <b>3(Default)</b>

ISU Code	Description	Possible Options ^ v
6	Temperature Display Adjustment	-2 °C- 2 °C, 0.5 °C, <b>Default 0 °C</b> (-4 °F- 4 °F, 1 °F, <b>Default 0 °F</b> )
7	Temperature Display Options	<b>0 Display room temperature (Default)</b> 1 Display set point
8	Heating Range Stop	10-32 °C <b>Default 32 °C</b> (50-90 °F <b>Default 90 °F</b> )
9	Cooling Range Stop	10-32 °C <b>Default 10 °C</b> (50-90 °F <b>Default 50 °F</b> )
10	Keypad Lockout	<b>0 All keys are available(Default)</b> 1 System button is locked 2 Fan and System button are locked 3 All buttons are locked except power button 4 All buttons are locked
11	Freeze Protection	<b>0 Disabled (Default)</b> 1 Enabled