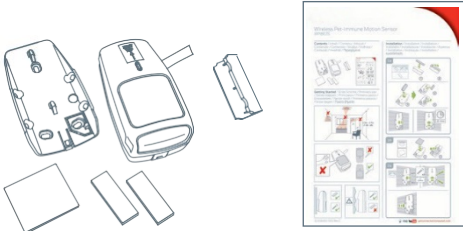


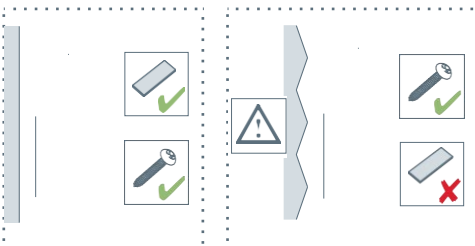
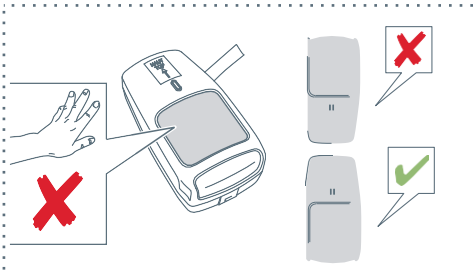
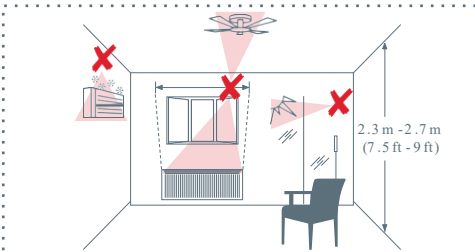


Wireless Pet-immune Motion Sensor IRPI8EZS

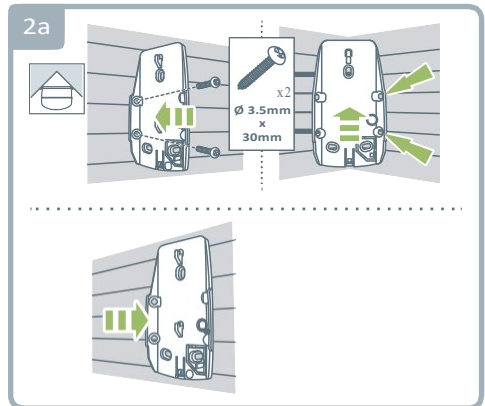
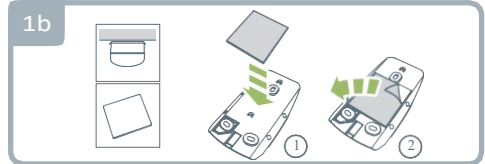
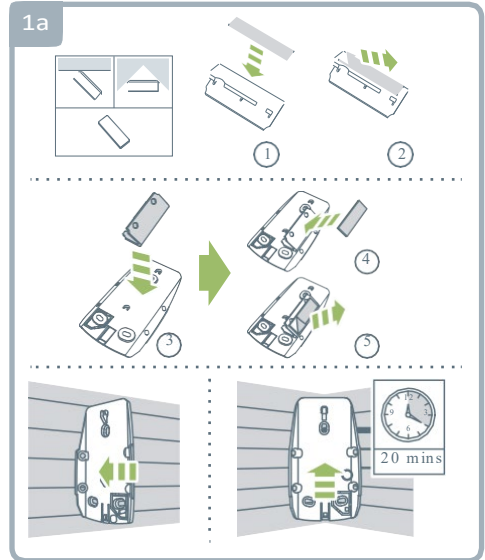
Contents / Inhalt / Contenu / Inhoud /
Contenuto / Contenido / Sisällys / Indhold /
Conteúdo / Innehåll / Περιεχόμενα



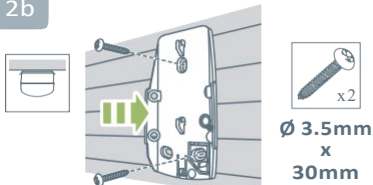
Getting Started / Erste Schritte / Premiers pas /
Erste stappen / Primi passi / Primeros pasos /
Ensiaskleet / Første skridt / Primeiros passos /
Första stegen / Πρώτα βήματα



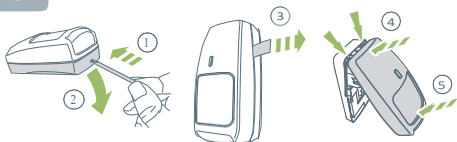
Installation / Installation / Installation /
Installatie / Installazione / Instalación / Asennus /
Installation / instalação / Installation /
εγκατάσταση



2b



3

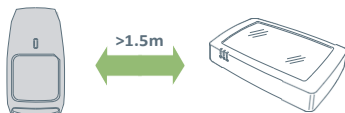


Linking / Verknüpfen / Mise en relation / Koppelen / Collegamento / Enlace / Linkittäminen / Sammenkædning / Vinculação / Länkande / Σύνδεση

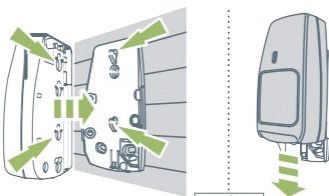
4



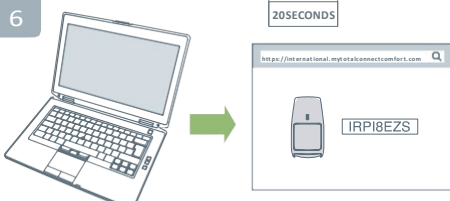
*<https://international.mytotalconnectcomfort.com>



5

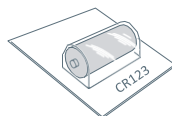


6



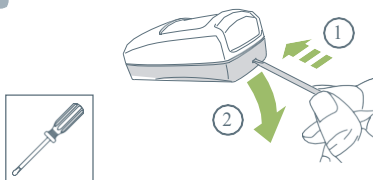
*<https://international.mytotalconnectcomfort.com>

Replacing Battery(s) / Ersetzen der Batterien / Remplacement des piles / Vervangen van de batterijen / Sostituire le batterie / Sustitución de las baterías / Paristojen vaihto / Substituição das pilhas / Byta batterier / Αντικατάσταση των μπαταριών

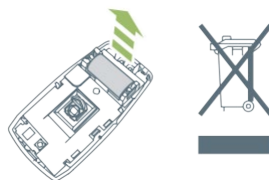


CR123 LITHIUM 3V

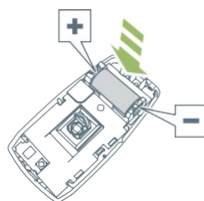
1



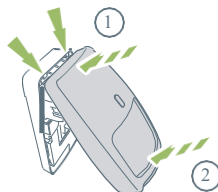
2



3



4





resideo

www.resideo.com

Ademco 1 GmbH
Hardhofweg 40
74821 Mosbach
Phone: +49 1801 466 388
info.de@resideo.com
homecomfort.resideo.com

@2020 Resideo Technologies, Inc. All rights reserved. The Honeywell Home trademark is used under license from Honeywell International Inc. This product is manufactured by Resideo Technologies, Inc and its affiliates.

Honeywell Home