

# Braukmann

## F70C/FN70C

Fine filter

### APPLICATION

F70C/FN70C filters ensure a continuous supply of filtered water.

The fine filter prevents the ingress of particulates, for example rust particles, strands of hemp and grains of sand and thus reduces the probability of corrosion.

The fine filters are used in systems where an existing pressure reducing valve is fitted or where one is not required. Both horizontal and vertical installation is possible.

### SPECIAL FEATURES

- Memory ring indicates when next manual reverse rinsing is due
- Large filter surface
- Shock resistant clear synthetic material filter bowl enables easy checking of filter contamination
- Filter and complete filter bowl are replaceable
- All materials are KTW approved




### TECHNICAL DATA

Media	
Medium:	Drinking water
Connections/Sizes	
Connection sizes:	3/4" - 1 1/4"
Pressure values	
Max. operating pressure:	16 bar
Operating temperatures	
Max. operating temperature medium accord. to EN 1567:	30 °C
Specifications	
Installation position:	Horizontal or vertical, with filter bowl downwards

Note: The filter is constructed for drinking water installations. In case of a process water application the filter has to be proven individually.

CONSTRUCTION

Overview			
	<b>1</b>	Housing with pressure gauge	High-quality synthetic material
	<b>2</b>	Rotatable connector piece (F70C only)	Red bronze
	<b>3</b>	Fine filter in clear filter bowl	Stainless steel, shock-resistant, clear transparent synthetic material filter bowl
	<b>Not depicted components:</b>		
		Double wring wrench	Plastic
	Seals	NBR	

METHOD OF OPERATION

Water flows through the filter mesh from outside to inside and this traps dirt particles on the outer face of the filter. For reasons of hygiene, the filter insert must be replaced at no longer than six monthly intervals. Where dirt is constantly present it is recommended that the unit be converted to a reverse rinsing filter F74C/FN74C.

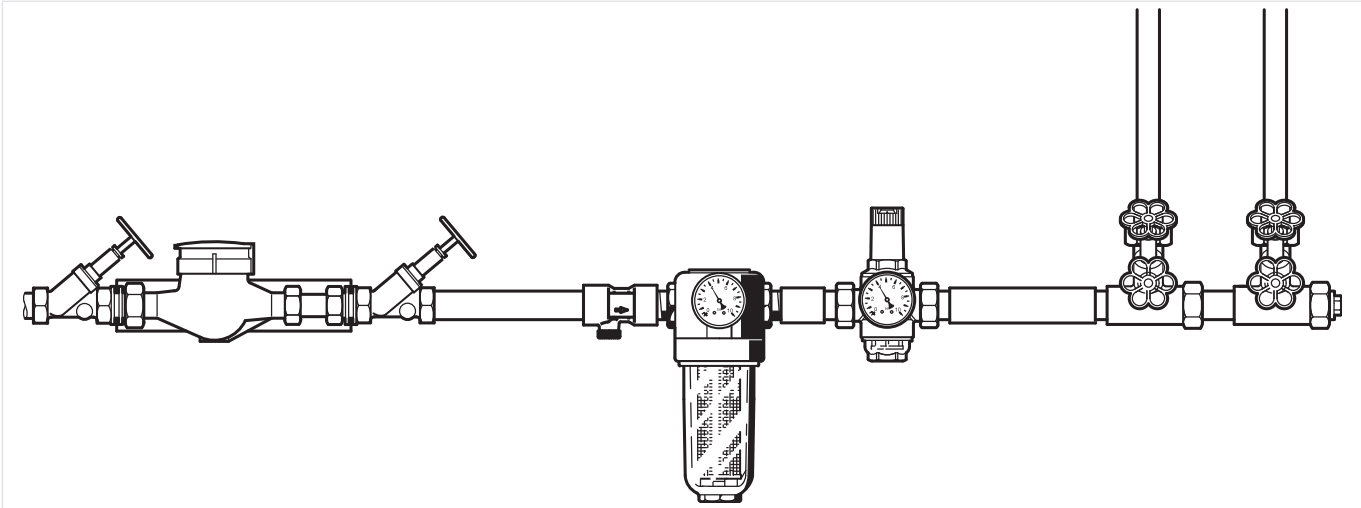
TRANSPORTATION AND STORAGE

Keep parts in their original packaging and unpack them shortly before use. The following parameters apply during transportation and storage:

Parameter	Value
Environment:	clean, dry and dust free
Min. ambient temperature:	5 °C
Max. ambient temperature:	55 °C
Min. ambient relative humidity:	25 % *
Max. ambient relative humidity:	85 % *

\*non condensing

Installation Example

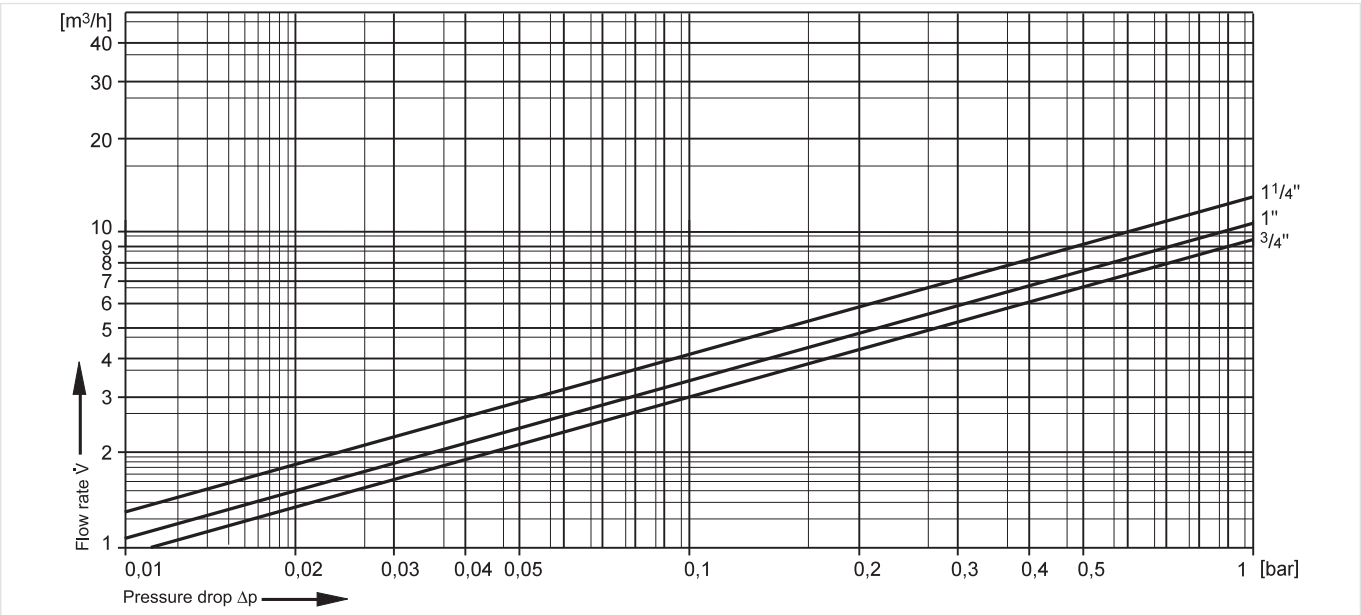


TECHNICAL CHARACTERISTICS

kvs-Values

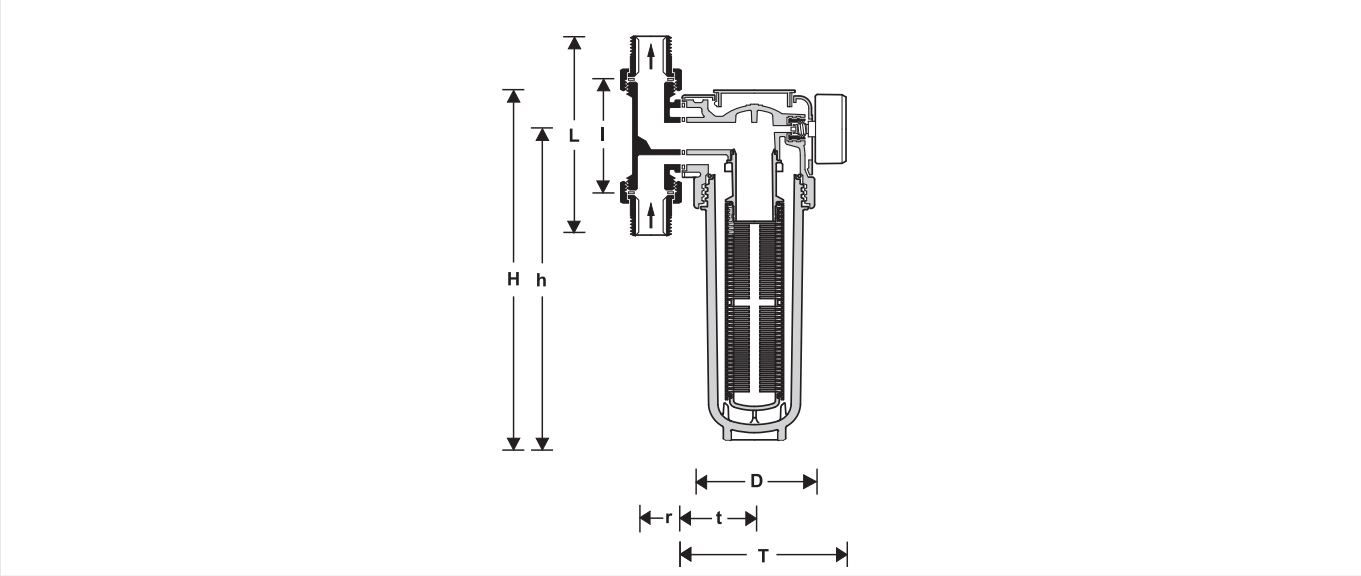
Connection sizes:	3/4"	1"	1 1/4"
k <sub>VS</sub> -value (m <sup>3</sup> /h):	9.9	10.8	12.5

Pressure drop characteristics



DIMENSIONS

Overview



Parameter		Values		
Connection size DA74C:	R	3/4"	1"	1 1/4"
Weight:	kg	2.7	3.2	3.6
Dimensions:	H	294	294	294
	h	256	256	256
	T	150	150	150
	t	66	66	66
	r	27	27	31
	D	105	105	105
	l	90	100	105
	L	162	184	203
Flow value at Δp=0.2 bar	m <sup>3</sup> /h	4.2	4.6	5.4

Note: All dimensions in mm unless stated otherwise.

## ORDERING INFORMATION

The following tables contain all the information you need to make an order of an item of your choice. When ordering, please always state the type, the ordering or the part number.

### Options

The filter is available in the following sizes:  $\frac{3}{4}$ ", 1" and  $1\frac{1}{4}$ ".



- standard
- not available

		F70C-...AA	FN70C-...A
Connection type:	Filter mesh size 100 µm, incl. rotatable connector piece DA74C with threaded male connections	•	-
	Filter mesh size 100 µm; rotatable connector piece DA74C has to be ordered separately - see accessories	-	•

Note: ... = space holder for connection size

Note: Ordering number example for 1" and type AA valve: F70C-1AA

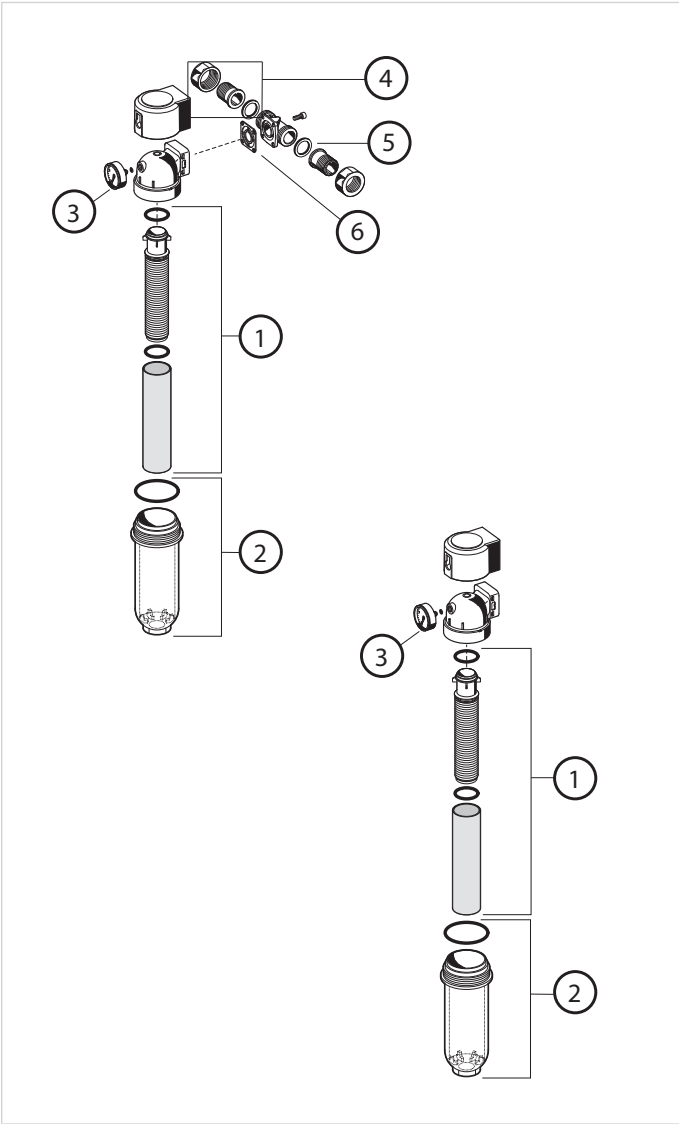
### Accessories

	Description	Dimension	Part No.
	<b>DA74C</b> <b>Rotatable connector piece</b> For connection of retrofit filters FN76CS.		
		$\frac{3}{4}$ "	DA74C-3/4A
		1"	DA74C-1A
		$1\frac{1}{4}$ "	DA74C-11/4A
	<b>VST06B</b> <b>Connection set</b> Solder connections		
		$\frac{1}{2}$ "	VST06-1/2B
		$\frac{3}{4}$ "	VST06-3/4B
		1"	VST06-1B
		$1\frac{1}{4}$ "	VST06-11/4B
		$1\frac{1}{2}$ "	VST06-11/2B
	<b>ZA76C</b> <b>Connector piece</b> For conversion of the fine filters with rotatable connector pieces ( $1\frac{1}{4}$ " and $1\frac{1}{2}$ " into retrofit filter combinations (Converts 63 mm hole centres to 45 mm hole centres)		
		$\frac{3}{4}$ "	ZA76C-3/4A
		1	ZA76C-1A
		$1\frac{1}{4}$ "	ZA76C-11/4A
	<b>ZR10K</b> <b>Double ring wrench for removing the filter bowl</b>		
		$\frac{3}{4}$ " - $1\frac{1}{4}$ "	ZR10K-3/4

Spare Parts

F70C/FN70C Filters from 2003 onwards

Overview



Description	Dimension	Part No.
<b>1 Filter insert complete</b>		
Filter mesh 100 µm	3/4" - 1 1/4"	AF70-1A
<b>2 Clear filter bowl complete</b>		
	3/4" - 1 1/4"	KF70-1A
<b>3 Pressure gauge</b>		
	0 - 16 bar	M07M-A16
<b>4 Connection set threaded connection</b>		
	3/4"	VST06-3/4A
	1"	VST06-1A
	1 1/4"	VST06-11/4A
<b>5 Union seal washer (10 pcs.)</b>		
	3/4"	0901444
	1"	0901445
	1 1/4"	0901446
<b>6 Flange seal</b>		
	3/4" - 1 1/4"	5975900



Manufactured for  
and on behalf of  
Pittway Sàrl, Z.A., La Pièce 4,  
1180 Rolle, Switzerland  
by its authorised representative  
Ademco 1 GmbH

For more information  
[homecomfort.resideo.com/europe](https://homecomfort.resideo.com/europe)  
Ademco 1 GmbH, Hardhofweg 40,  
74821 MOSBACH, GERMANY  
Phone: +49 6261 810  
Fax: +49 6261 81309