



## EW370 Series

### Woltman Flow Meters

DN40...300 for Heating and Chilled Water Applications

#### APPLICATION

Honeywell Home EW370 Series Woltman flow meters are used for volume measurement of heating or chilled water in hydronic heating and cooling systems. They have a mechanical roller counter with fixed pulse output for connection to an energy calculator, e.g. Honeywell Home EW500 Series, or remote readout applications. When combined with an EW500 energy calculator they act as flow sensor and provide volume measurement to the energy calculator. When combined with an EW535M0056 pulse to M-Bus converter they can be integrated into an M-Bus network.

#### SPECIAL FEATURES

- Suitable for horizontal and vertical installation
- Pulse out as standard
- Low pressure loss
- Rugged design for longterm accuracy



#### TECHNICAL DATA

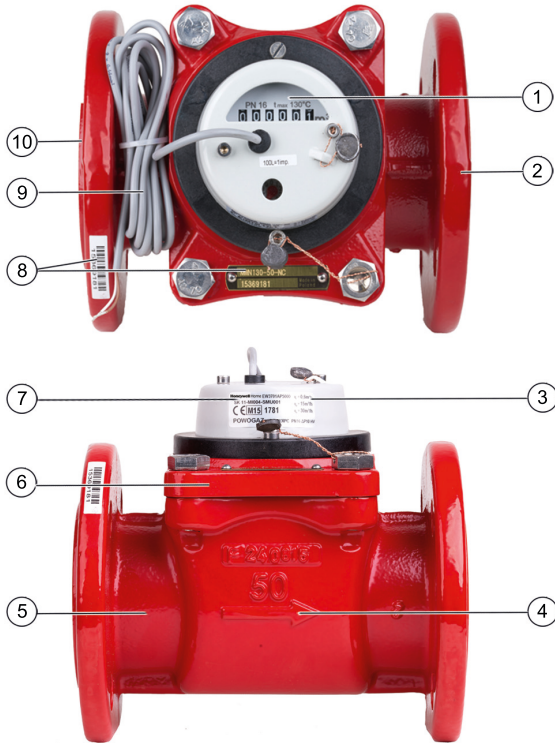
Media	
Medium:	Water, quality according to VDI2035
Sizes	
Nominal size diameter:	DN40 - 300
Nominal flow qp:	15 - 600 m <sup>3</sup> /h
Operating temperatures	
Medium temperature:	0.1 - 130 °C
Ambient temperature:	5 - 55 °C
Specifications	
Operating pressure:	PN16
Operating pressure range:	0.3 - 16 bar
Pressure loss class:	Δ P10
Protection class:	IP66
Environmental class:	C
Electromagnetic class:	E1
Mechanical class	M1

Specifications	
Measuring process:	Mechanical counter with Woltman WP type flow measurement
Display:	Six- or seven-digit roller counter
Display:	DN40 - 125: 10 <sup>6</sup> m <sup>3</sup> DN150 - 300: 10 <sup>7</sup> m <sup>3</sup>
Increments:	1 m <sup>3</sup>
Acceptable error:	±(3+0.05 qp/q) %, no more than 5 %
Pulse value:	100 litres or 1000 litres
Installation position:	H, V (horizontal, vertical)
Approvals:	MID (Class 3)

Flow Data

Nominal size diameter:	DN	40, 50	65	80	100	125	150	200	250	300
Flow rates according to MID										
Minimum (qi):	m³/h	0.6	1	1.6	2.4	4	6	10	40	60
Nominal (qp):	m³/h	15	25	40	60	100	150	250	400	600
Maximum (qs):	m³/h	30	50	80	120	200	300	500	800	1.200
Dynamic range:	qp/qi	25	25	25	25	25	25	25	10	10
Additional flow data										
Starting flow:	m³/h	0.25	0.3	0.35	0.6	1.1	2	4	8	15
Pulse value:	l/pulse	100	100	100	100	100	100	100	100	1000

CONSTRUCTION

Overview		
		
	<b>Components</b>	<b>Materials</b>
	<b>1</b> Register with roller counter and reed switch	-
	<b>2</b> Outlet	-
	<b>3</b> Register cover	Metal
	<b>4</b> Flow arrow and DN size	-
	<b>5</b> Housing	Cast iron, painted red, with flanges to EN 1092-2 PN16
	<b>6</b> Top cover	Cast iron, painted red
	<b>7</b> Type plate	-
	<b>8</b> Serial number	-
	<b>9</b> Pulse cable, length 1.5 m	-
	<b>10</b> Inlet	-

TRANSPORTATION AND STORAGE

Keep parts in their original packaging and unpack them shortly before use.

The following parameters apply during transportation and storage:

Parameter	Value
Environment:	clean, dry and dust free
Min. ambient temperature:	5 °C
Max. ambient temperature:	55 °C
Min. ambient relative humidity:	5 % *
Max. ambient temperature:	95 % *

\*non condensing

INSTALLATION GUIDELINES

Setup requirements

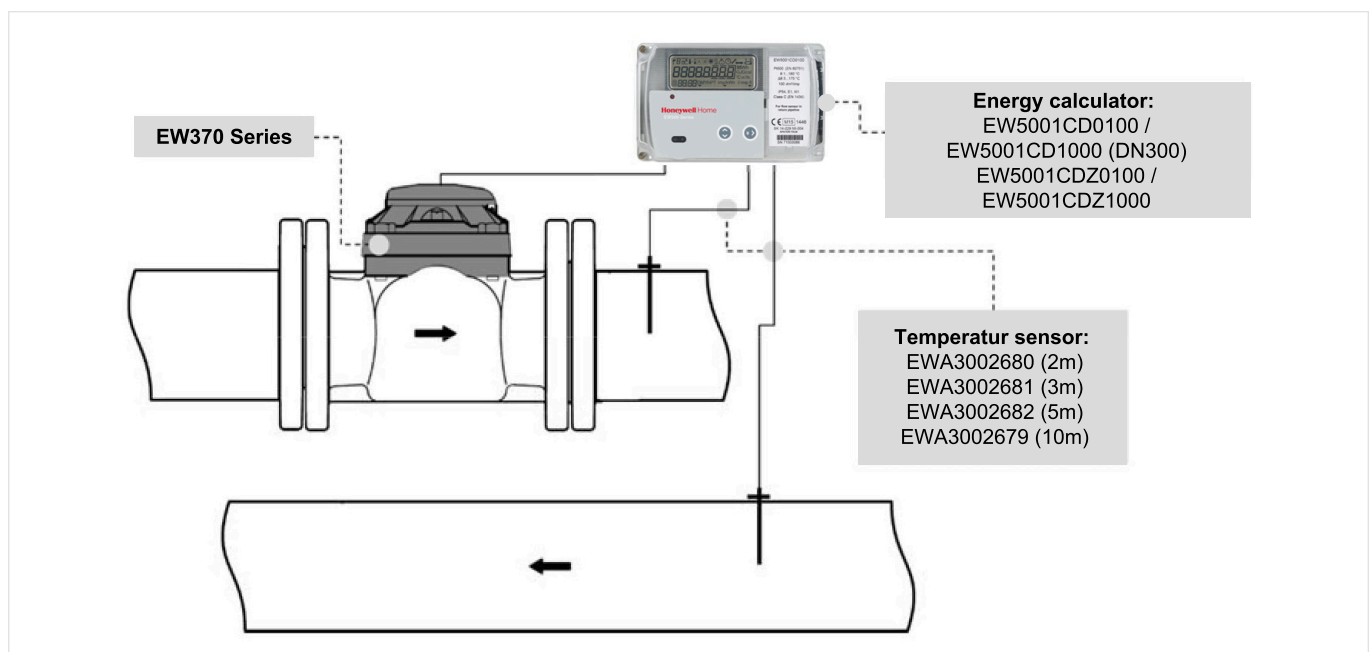
- Calming legs are not required unless bends, pumps or self-acting valves are placed before or after the meter. In such cases calming legs of straight pipe with a minimum length of 6 x DN before and 2 x DN after the meter are required
- All sizes may be installed in either horizontal or vertical position
- The meter must be installed in the right flow direction which is indicated by an arrow on the sensor housing
- The meter must be installed in such a way that the counter faces up or sideways. It must not be installed in such a way that the counter faces downwards
- Avoid installation at highest point of system or system part as air may be trapped in meter
- During measurement meter must be completely filled with water

## Remote Readout

EW370 Series flow meters are fitted with a pulse out for connection to energy integrators or remote readout applications. The pulse out cable has a length of 1.5 meter. It is the responsibility of the purchaser and the installers and users of this unit to ensure that it is wired or installed into a secure network which prevents any unauthorized security intrusion or any other external risk.

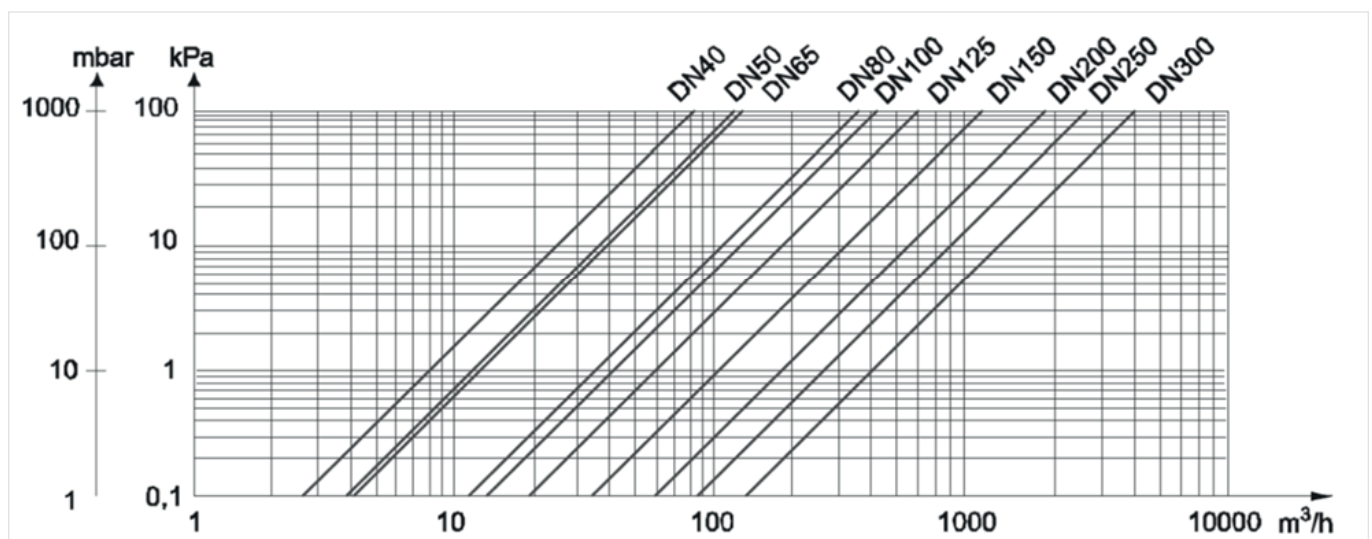
Type:	Reed switch
Connecting power:	max. 10 W
Resistance in closed state:	max. 10 $\Omega$
Resistance in open state:	min. 150 M $\Omega$
Maximum current in closed state:	500 mA
Admissable voltage in open state:	max. 200 V

## Installation Example

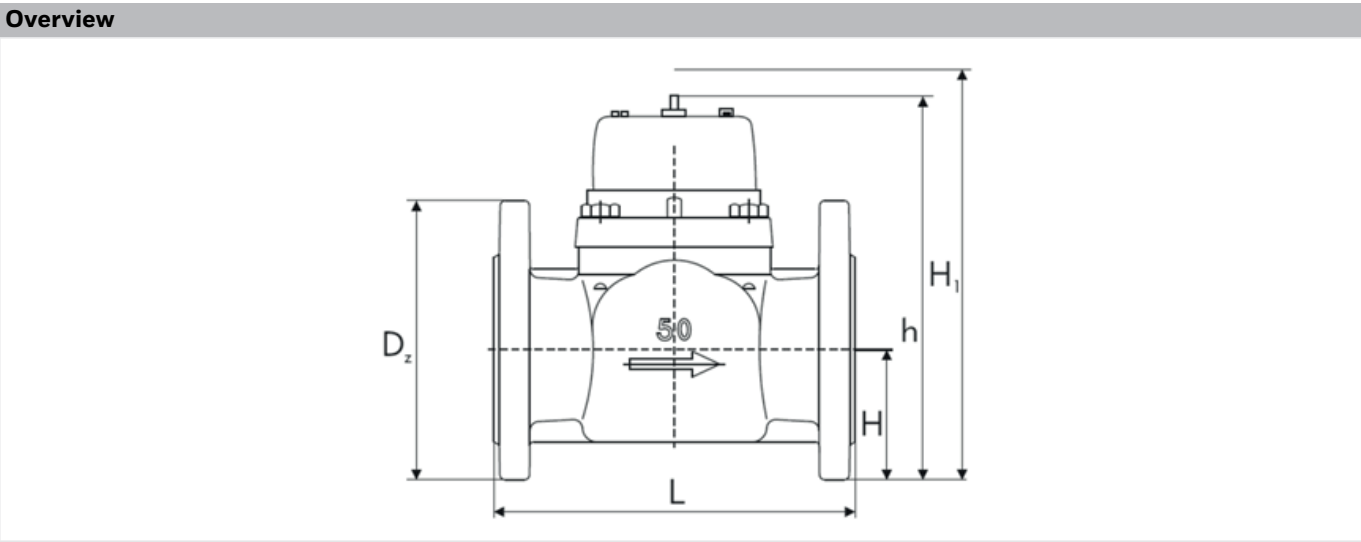


## TECHNICAL CHARACTERISTICS

### Pressure drop characteristics



DIMENSIONS



Nominal size diameter:	DN	40	50	65	80	100	125	150	200	250	300
Dimensions:	L	200	200	200	225	250	250	300	350	450	500
	H	177	187	197	219	229	257	357	382	427	497
	H1	277	287	297	239	349	377	582	607	652	722
	h	65	72	83	95	105	120	135	160	193	230
	D	150	165	185	200	220	250	285	340	400	460
Flanges:	Bolt circle Ø	110	125	145	160	180	210	240	295	355	410
	Bolts	4xM16	4xM16	4xM16	8xM16	8xM16	8xM16	8xM20	12xM20	12xM24	12xM24
Weight:	kg	8	10	11	14	16	18	40	51	75	103

Note: All dimensions in mm unless stated otherwise  
Height H1 = space required for removal of measuring insert

ORDERING INFORMATION

When ordering, please state ordering number.

Options

Item	Nominal size diameter	Nominal flow qp	Pulse value	Ordering number	Suitable calculator
EW3701A Woltman flow meters for heating and chilled water	DN40	15 m³/h	100 litres	EW3701AP4900	EW5001CD0100 EW5001CDZ0100
	DN50	15 m³/h		EW3701AP5000	
	DN65	25 m³/h		EW3701AP5600	
	DN80	40 m³/h		EW3701AP6500	
	DN100	60 m³/h		EW3701AP7300	
	DN125	100 m³/h		EW3701AP8100	
	DN150	150 m³/h		EW3701AP8500	
	DN200	250 m³/h		EW3701AP8900	
	DN250	400 m³/h		EW3701AP9100	
	DN300	600 m³/h	1.000 litres	EW3701AP9203	EW5001CD1000 EW5001CDZ1000

## Accessories

	Description	Part No.
	<b>Pair of Pt500 temperature sensors, Ø5.2 mm (MID approved)</b>	
	Cable length 2 m	EWA3002680
	Cable length 3 m	EWA3002681
	Cable length 5 m	EWA3002682
	Cable length 10 m	EWA3002679
	<b>Energy calculator</b>	
	100 liter per pulse	EW5001CD0100
	1000 liter per pulse	EW5001CD1000
	100 liter per pulse	EW5001CDZ0100
	1000 liter per pulse	EW5001CDZ1000
	<b>Modules</b>	
	Pulse to M-Bus Module	EW535M0056
	<b>Immersion pocket</b>	
	EW3701AP4900 QP15, PN16 DN40F	2 x EWA3002685
	EW3701AP5000 QP15, PN16 DN50F	2 x EWA3002685
	EW3701AP5600 QP25, PN16 DN65F	2 x EWA3002685
	EW3701AP6500 QP40, PN16 DN80F	2 x EWA3004406
	EW3701AP7300 QP60, PN16 DN100F	2 x EWA3004406
	EW3701AP8100 QP100, PN16 DN125F	2 x EWA3004406
	EW3701AP8500 QP200, PN16 DN150F	2 x EWA3004407
	EW3701AP8900 QP250, PN16 DN200F	Not available
	EW3701AP9100 QP400, PN16 DN250F	Not available
	EW3701AP9203 QP600, PN16 DN300F	Not available

## For more information

[homecomfort.resideo.com/europe](http://homecomfort.resideo.com/europe)



Ademco 1 GmbH  
 Hardhofweg 40  
 74821 MOSBACH  
 GERMANY  
 Phone: +49 6261 810  
 Fax: +49 6261 81309

Manufactured for and on behalf of the  
 Pittway Sàrl, La Pièce 4, 1180 Rolle, Switzerland  
 by its Authorised Representative Ademco 1 GmbH  
 EN0H-0460GE23 R0420

Subject to change

© 2020 Pittway Sàrl. All rights reserved.

This document contains proprietary information of  
 Pittway Sàrl and its affiliated companies and is  
 protected by copyright and other international laws.  
 Reproduction or improper use without specific  
 written authorisation of Pittway Sàrl is strictly  
 forbidden. The Honeywell Home trademark is used  
 under license from Honeywell International Inc.

**Honeywell Home**