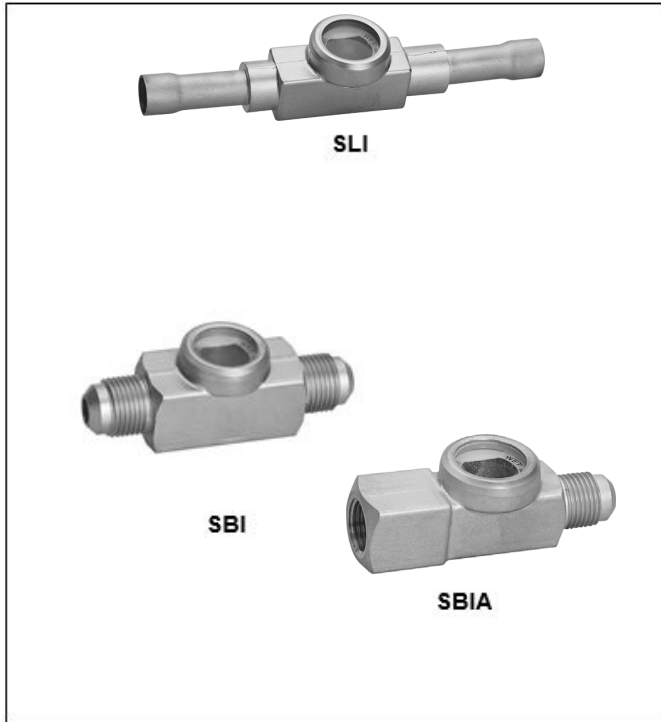




Series SLI/SBI

SIGHT GLASSES WITH MOISTURE INDICATOR

PRODUCT DATA



Features

- Large display area
- Moisture indicator
- Low pressure loss
- SLI with solder connections on both sides
- SBI with flare connections on both sides
- SBIA with flare connections, female thread x male thread
- Refrigerants: all CFC, HCFC, HFC, not for R12, R502 and ammonia

Specifications

Moisture indicator range see table on page 2
 Max. ambient temperature TS 80 °C
 Diameter display area 22.5 mm

Type	Maximum pressure PS	Maximum test pressure PF
SLI 6; SLI 1/4 SLI 10; SLI 3/8 SLI 12; SLI 1/2 SLI 15 SLI 16 (5/8)	44 bar(a)	63 bar(a)
SLI 18; SLI 3/4 SLI 22 (7/8) SBI SBIA	36 bar(a)	51,5 bar(a)
SLI 28; SLI 1 1/8	35 bar(a)	50 bar(a)

Application

Sight glasses series SLI/SBI/SBIA show the condition of the refrigerant flowing through the lines in the refrigerating plant, for example it is possible to see if the refrigerant in the liquid line is free of bubbles.

The moisture indicator shows the moisture content in the refrigerant.

Materials

Housing brass
Display area pressure resistant glass,
 indicator paper
Connection tubes Solder: copper
 Flare: brass

Moisture Indicator

The colour of the indicator is a measure for the moisture load of the refrigerant inside the plant.

The range of indication depends on the refrigerant:

Refrigerant	Indication Range		
	dry (green)	Transition	wet (yellow)
R22	< 30 ppm	30 – 150 ppm	> 150 ppm
R134a	< 60 ppm	60 – 100 ppm	> 100 ppm
R404A	< 20 ppm	20 – 100 ppm	> 100 ppm
R407C	< 20 ppm	20 – 130 ppm	> 130 ppm
R410A	< 40 ppm	40 – 150 ppm	> 150 ppm
R507A	< 20 ppm	20 – 100 ppm	> 100 ppm

Indication temperature: 30 °C

Green colour: Moisture free.

Only a moisture-free refrigerant assures no trouble with the expansion valve coming from humidity.

Transition range:

When the green colour begins to fade, it is an indication that small quantities of moisture are present. It is recommended to change the filter drier.

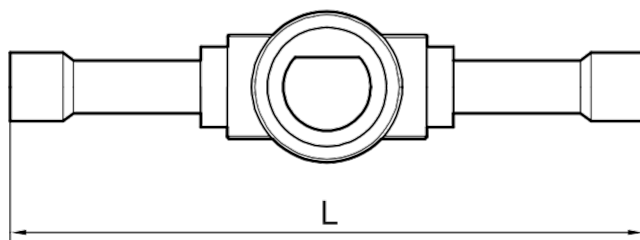
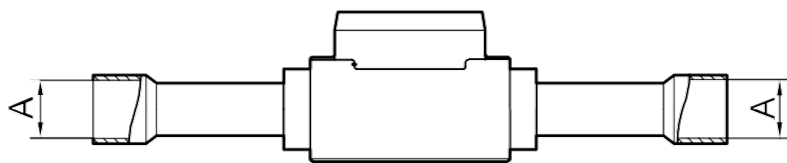
Yellow colour: Wet.

The refrigerant is loaded with moisture higher than the stated values. A change of the filter drier is required.

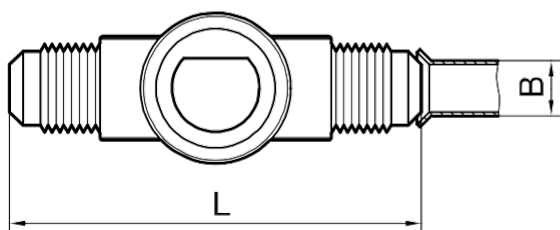
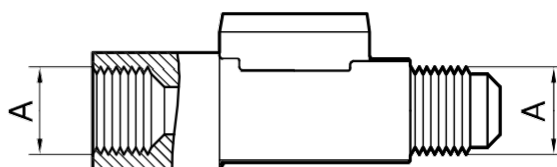
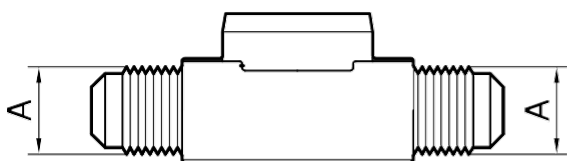
Due to the humidity in the air, the indicator is yellow on delivery. After the installation inside the plant, the indicator will change to green when filling the system with dry refrigerant.

Dimensions and Weights

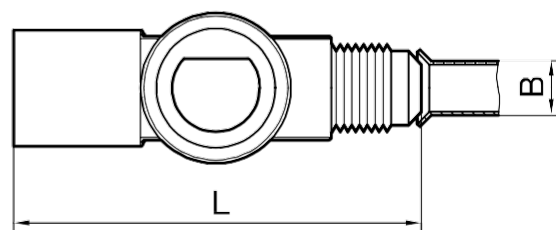
Type	Dimensions			Weight approx. (kg)	
	Connection (A)	Pipe diameter (B)	Length (L)		
SLI 6	6 mm ODF	6 mm	106 mm	0.15	
SLI 10	10 mm ODF	10 mm	119 mm	0.15	
SLI 12	12 mm ODF	12 mm	144 mm	0.20	
SLI 15	15 mm ODF	15 mm	146 mm	0.17	
SLI 16	16 mm; 5/8" ODF	16 mm; 5/8" ODF	146 mm	0,17	
SLI 18	18 mm ODF	18 mm	183 mm	0.22	
SLI 22	22 mm; 7/8" ODF	22 mm; 7/8" ODF	183 mm	0,24	
SLI 28	28 mm ODF	28 mm	188 mm	0.48	
SLI 1/4	1/4" ODF	1/4"	106 mm	0.15	
SLI 3/8	3/8" ODF	3/8"	119 mm	0.15	
SLI 1/2	1/2" ODF	1/2"	144 mm	0.19	
SLI 3/4	3/4" ODF	3/4"	183 mm	0.22	
SLI 1 1/8	1 1/8" ODF	1 1/8"	188 mm	0.48	
SBI 6	7/16" UNF	6 mm	1/4"	70 mm	0.15
SBI 10	5/8" UNF	10 mm	3/8"	76 mm	0.15
SBI 12	3/4" UNF	12 mm	1/2"	88 mm	0.17
SBI 16	7/8" UNF	16 mm	5/8"	98 mm	0.29
SBIA 6	7/16" UNF	6 mm	1/4"	60 mm	0.30
SBIA 10	5/8" UNF	10 mm	3/8"	76 mm	0.15
SBIA 12	3/4" UNF	12 mm	1/2"	74 mm	0.19
SBIA 16	7/8" UNF	16 mm	5/8"	78 mm	0.31



SLI



SBI



SBIA

Type Code / Order Information

	S	B	I	A		12
Series	┌					
Connection type: B = flare L = solder		┌				
Indicator			┌			
A = Inner and outer connection ()				┌		
Tube connection size (mm, inch)						┌

KAT-SLI/SBI-002



Ademco 1 GmbH
Hardhofweg 40
74821 Mosbach
Phone: +49 1801 466 388
info.de@resideo.com
homecomfort.resideo

@2020 Resideo Technologies, Inc. All rights reserved The Honeywell Home trademark is used under license from Honeywell International Inc. This product is manufactured by Resideo Technologies, Inc and its affiliates.

