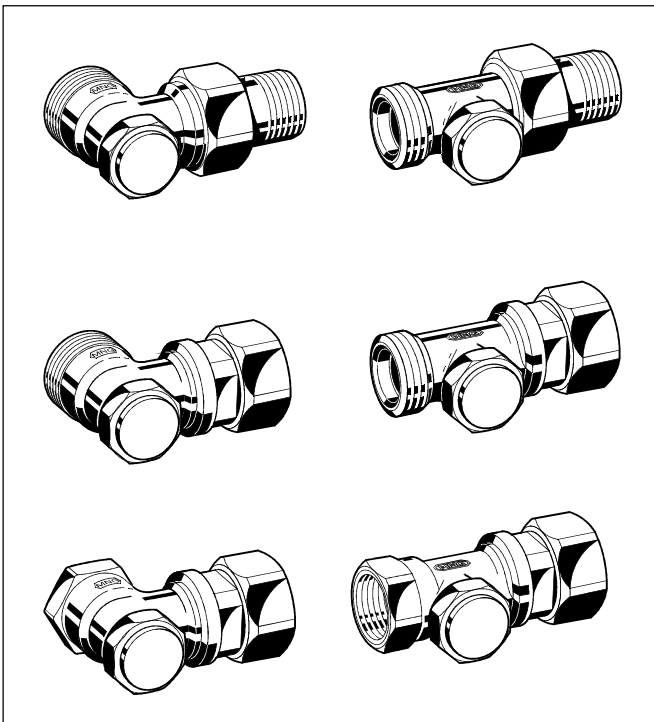


V2465, V2466 Verafix-EK

LOCKSHIELD VALVES FOR COMPACT RADIATORS

PRODUCT DATA



Application

The Verafix-EK is a single lockshield valve to connect compact radiators or universal radiators to heating loops of two-pipe heating systems. It offers shutoff, pre-setting, draining and filling function. Two Verafix-EK are required to connect a radiator to the heating circuit.

Features

- Offers shutoff, pre-setting, draining and filling function
- Draining and filling by means of draining adapter with 3/4" hose connection (accessory)
- Optional flow direction
- Valve body made of corrosion-resistant red bronze
- Available for various types of pipe and radiator connections

Specifications

Medium	Heating water
pH-value	8...9,5
Operating temperature	max. 130°C (266°F)
Operating pressure	max. 10 bar (145 P.S.I.)
Kvs-values	1,70 (angle body) 1,45 (straight body)

Design

The Verafix-EK is made up of:

- Valve housing PN10, DN15, valve inlet with external threads 3/4" Eurocone for connection of copper, soft steel or composite pipe using connection fittings (see 'Accessories' on page 3). Or with internal threads according to ISO 7 (DIN 2999) for direct connection of threaded pipe or connection of copper, soft steel or composite pipe using compression fittings (see 'Accessories')
- Valve insert
- Cap
- Union-nut, partly with tailpiece. Suitable for radiators with G 3/4" external threads or R 1/2" internal threads

Materials

- Valve housing made of nickel-plated red bronze RG5 according to DIN 1705
- Valve insert made of brass with EPDM O-rings
- Cap made of brass with PTFE sealing
- Union-nut and tailpiece made of brass, union-nut additionally nickel-plated

Function

The flow rate through the Verafix-EK is throttled to the desired value by pre-setting the valve insert with a 4 mm Allan key. Relation between number of turns and flow rate can be taken from the flow diagram at the end of this data sheet. Pre-setting only has to be done on one valve. The Verafix-EK doesn't need to be pre-set when the radiator is equipped with a pre-settable TRV insert and throttling is done over that device.

The radiator is shutoff from the heating circuit by turning the valve inserts of both Verafix-EK clockwise as far as possible. The radiator can be drained and filled over the Verafix-EK by using the draining adapter (accessory).

Verafix-EK lockshield valves are supplied fully open.

Dimensions

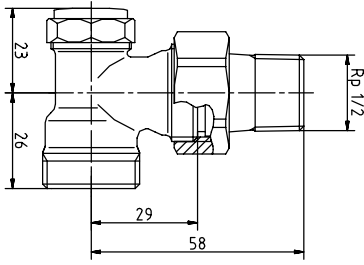


Fig. 1. Angle with 3/4" external to 1/2" external thread

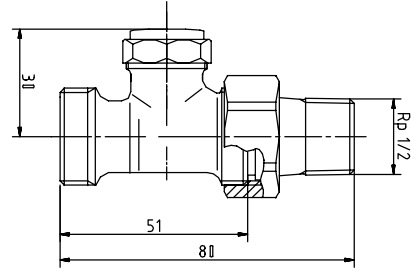


Fig. 2. Straight with 3/4" external to 1/2" external thread

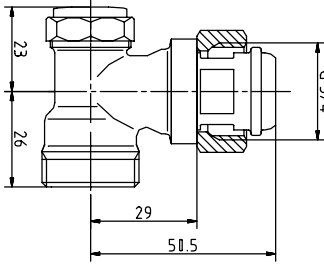


Fig. 3. Angle with 3/4" external to 3/4" internal thread

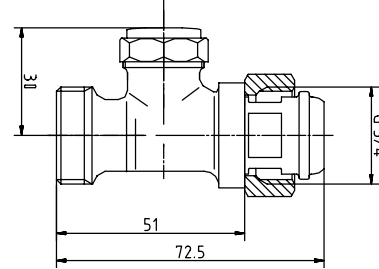


Fig. 4. Straight with 3/4" external to 3/4" internal thread

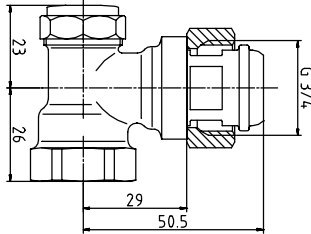


Fig. 5. Angle with 1/2" internal to 3/4" internal thread

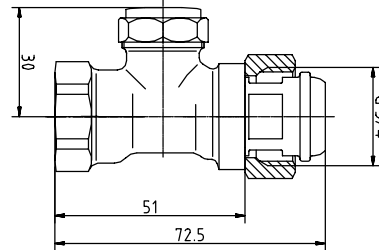


Fig. 6. Straight with 1/2" internal to 3/4" internal thread

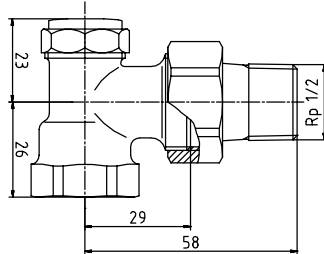


Fig. 7. Angle with 1/2" internal to 1/2" external thread

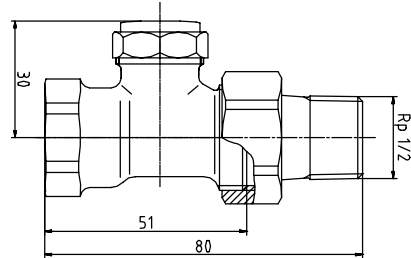


Fig. 8. Straight with 1/2" internal to 1/2" external thread

NOTE: All dimensions given in mm unless otherwise stated.

Ordering Information

Type	DN	Valve inlet	Valve outlet	kvs-value	OS-No.
Angle	15	3/4" external	1/2" external	1,70	V2465EY015
Straight	15	3/4" external	1/2" external	1,45	V2465DY015
Angle	15	3/4" external	3/4" internal	1,70	V2465EX020
Straight	15	3/4" external	3/4" internal	1,45	V2465DX020
Angle	15	1/2" internal	3/4" internal	1,70	V2466EX020
Straight	15	1/2" internal	3/4" internal	1,45	V2466DX020
Angle	15	1/2" internal	1/2" external	1,70	V2420E0015
Straight	15	1/2" internal	1/2" external	1,45	V2420D0015

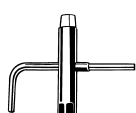
Accessories

Draining adapter



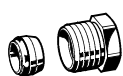
for all Verafix-EK 0 08 08 02 000 000

Special Verafix-key



for all Verafix-EK 0 44 20 00 110 000

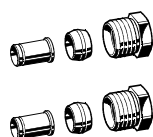
Compression fitting for copper and soft steel pipe



1/2" x 10 mm	1 01 01 37 015 000
1/2" x 12 mm	1 01 01 15 015 000
1/2" x 14 mm	1 01 01 19 015 000
1/2" x 15 mm	1 01 01 22 015 000
1/2" x 16 mm	1 01 01 21 015 000

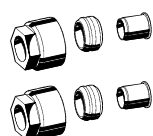
NOTE: Use support inserts for soft steel and copper pipe (wall thickness 1,0 mm, also see DVGW-Guideline GW 2).

Compression fitting with support inserts for copper and soft steel pipe (2 pcs)



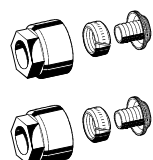
1/2" x 12 mm	1 01 01 38 120 000
1/2" x 15 mm	1 01 01 38 150 000
1/2" x 16 mm	1 01 01 38 160 000

External thread fittings for copper and soft steel pipe (2 pcs)



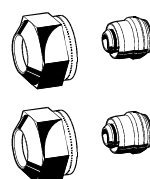
3/4" x 10 mm	1 01 01 47 100 000
3/4" x 12 mm	1 01 01 47 120 000
3/4" x 14 mm	1 01 01 47 140 000
3/4" x 15 mm	1 01 01 47 150 000
3/4" x 16 mm	1 01 01 47 160 000
3/4" x 18 mm	1 01 01 47 180 000

External thread fittings for plastic pipe (2 pcs)



3/4" x 12 x 2 mm	1 01 01 46 120 000
3/4" x 14 x 2 mm	1 01 01 46 140 000
3/4" x 16 x 2 mm	1 01 01 46 160 000
3/4" x 17 x 2 mm	1 01 01 46 170 000
3/4" x 18 x 2 mm	1 01 01 46 180 000

External thread fittings for composite pipe (2 pcs)



3/4" x 14 x 2 mm	1 01 01 46 240 000
3/4" x 16 x 2 mm	1 01 01 46 260 000
3/4" x 18 x 2 mm	1 01 01 46 280 000

Radiator tailpiece with thread up to collar



for all Verafix-EK 0 20 17 01 015 801

Extension tailpiece



for all Verafix-EK 0 20 17 03 015 000

Soldering tailpiece



for all Verafix-EK 0 20 53 01 015 000

Nickel-plated union-nut



for all Verafix-EK 0 20 18 15 015 926

Nickel-plated cap



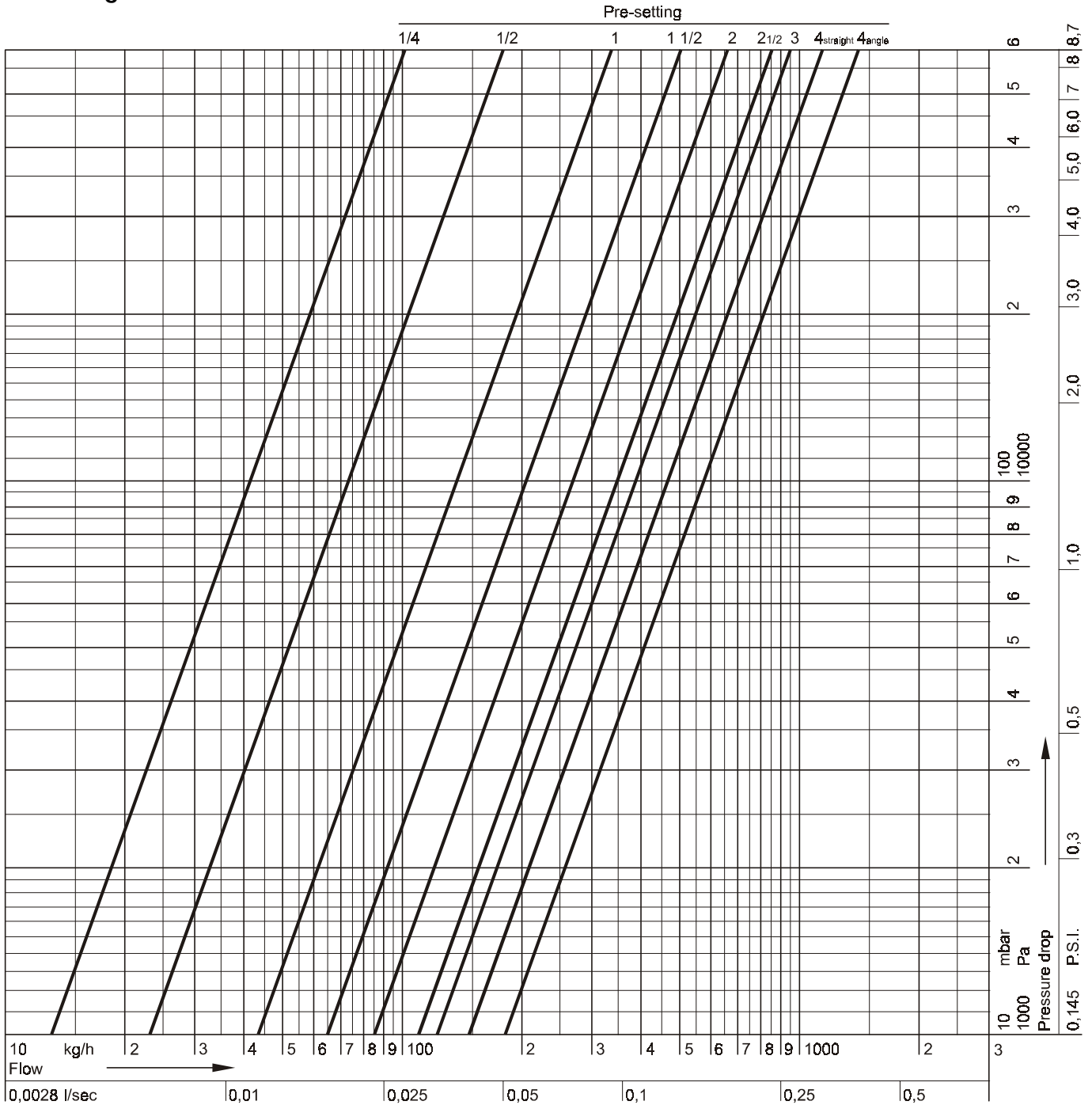
for all Verafix-EK 0 20 55 04 240 926

Sealing for cap



for all Verafix-EK 0 40 45 10 210 000

Flow Diagram



Pre-setting = Number of turns	1/4	1/2	1	1 1/2	2	2 1/2	3	4 = open
k_v-value angle	0,13	0,22	0,43	0,65	0,85	1,10	1,25	k _{vs} = 1,70
k_v-value straight	0,13	0,22	0,43	0,65	0,85	1,10	1,25	k _{vs} = 1,45

Honeywell

Home and Building Control

Honeywell AG
 Zu den Ruhrwiesen 3
 D-59755 Arnsberg-Neheim

Phone: (49) 2932 9880
 Fax: (49) 2932 988239
 mng@honeywell.com

<http://europe.hbc.honeywell.com>