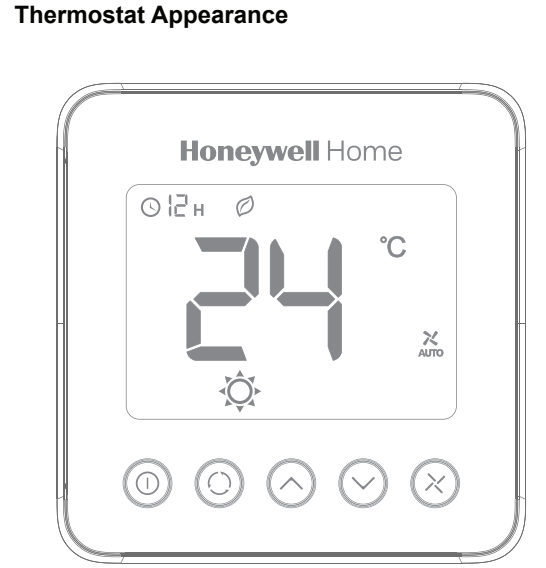


User Manual
TF243 Series Digital Thermostat



Operating Your Thermostat

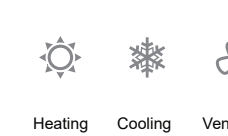
ⓘ Power On/Off
Time-off

- Press ⓘ to switch on/off thermostat. When in off mode, OFF icon and indoor temperature will display.
 - Press ⓘ could set the automatical turn off time when the thermostat is working.
- Press ⓘ and hold for more than 3s. After timer icon flashes, press ⬆ or ⬇ to set turn off time, then press ⓘ button to exit.

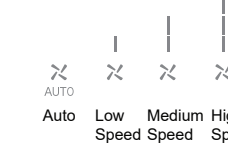
⬆ ⬇ Temperature
Setting

In ☀ or ❄ mode, press ⬆ or ⬇ to set the target room temperature.

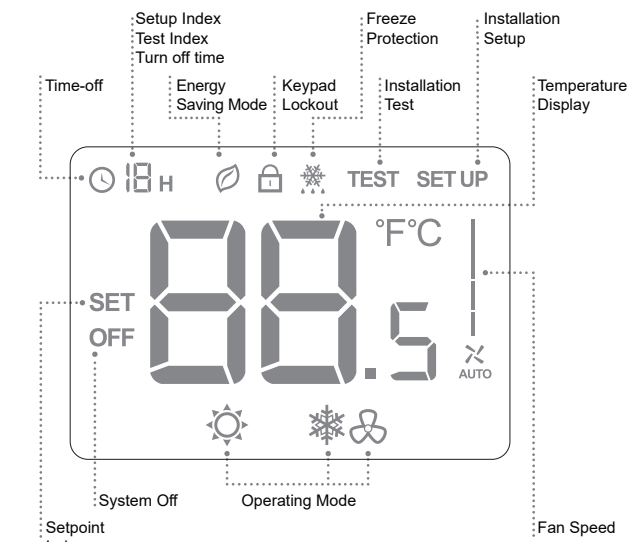
⌚ Operating Mode



⌘ Fan Speed
Setting



LCD Display



Trouble Shooting Tips

If....	Then....
☀ Doesn't work	<ul style="list-style-type: none">• Set the mode to ☀ (heating mode) by press ⌚• Make sure the temperature is set above the room temperature• Wait 5 minutes for the system to respond
❄ Doesn't work	<ul style="list-style-type: none">• Set the mode to ❄ (cooling mode) by press ⌚• Make sure the temperature is set below the room temperature• Wait 5 minutes for the system to respond
⌚ Doesn't work	<ul style="list-style-type: none">• Make sure keypad is unlocked• Check that the thermostat is on
⬆ ⬇ Doesn't work	<ul style="list-style-type: none">• Make sure keypad is unlocked• Make sure the system isn't in ⌚ mode• Check that the thermostat is on
The system turns off automatically	<ul style="list-style-type: none">• Make sure the memorized time off value isn't set to "0"
Time-off doesn't work	<ul style="list-style-type: none">• Make sure the button is unlocked• Make sure the turn off time is not 0• Make sure the thermostat is not in ISU• Make sure the thermostat is not off

Installation Guide

Must be installed by a trained and experienced installer

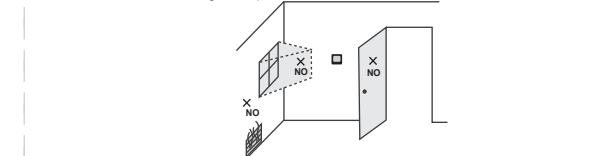
- Read instruction carefully. Failure to follow instruction will damage the product or cause a hazardous condition.
- Check the ratings in this booklet to verify that this product is suitable for your application.
- Always test for proper operation after installation.

Caution: ELECTRICAL HAZARD can cause electrical shock or equipment damage. Disconnect power before installation, reparation and detachment.

The manual interpretation is owned by Resideo Technologies, Inc. and its affiliates, we retain the rights that improve the products described in this manual without prior notice.

Installation Tips

TF243 Series is designed for standard 75x75x50mm wall mounting box installation. Install the thermostat about 5 feet (1.5m) above the floor in an area with good air circulation at average temperature.

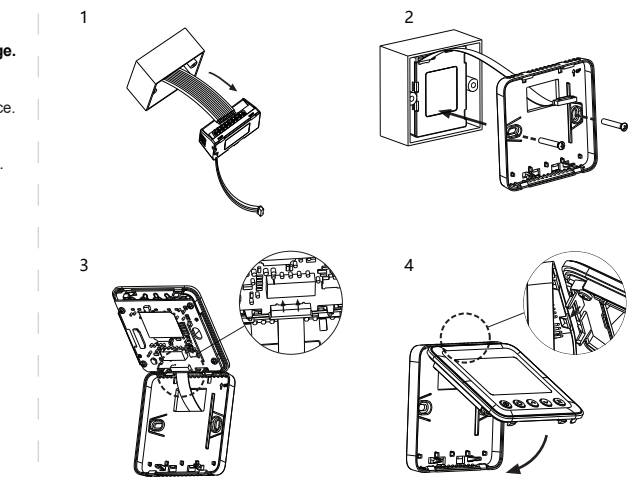


Do not install in locations where the thermostat can be affected by:

- Dead spots behind doors and in corners
- Hot or cold air from ducts
- Sunlight or radiant heat from appliances
- Concealed pipes or chimneys
- The temperature of mounting box and wall should be in the operating temperature range.

Wiring and Installation

The screw must be locked tightly to avoid wire break off from the terminal. The wire should not be tangled and stucked between front case assembly and back case.





www.resideo.com

©2020 Resideo Technologies, Inc. All rights reserved.
The Honeywell Home trademark is used under license from Honeywell International Inc.
This product is manufactured by Resideo Technologies, Inc. and its affiliates.

Pittway Sarl, Z.A. La Pièce 4,
1180 Rolle, Switzerland
Country of origin: China

R32347117_B
Subject to Change without notice.

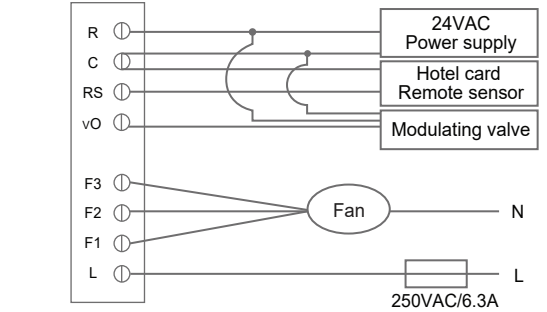
Terminal Designations

Terminal	Description
R	24VAC operating voltage
C	Common 24vac / Common for control output
RS	Remote temperature sensor/ Hotel card
vO	0-10V Modulating signal output for valve
F3	High speed fan output
F2	Medium speed fan output
F1	Low speed fan output
L	Live wire

- * Input rating: 24VAC(+10% , -10%) 50/60Hz
220/230VAC(+10% , -10%) 50/60Hz
- * The vO terminal RL>600 ohms

Two pipe application

Wiring Diagram



Valve type: Honeywell / Resideo VC7931 Serials



Warning

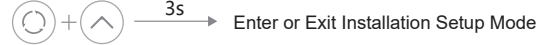
* **The 24VAC power supply should meet Class2 SELV and less than 100VA**

* **A FUSE or BREAKER is necessary before L terminal.**



WEEE Directive 2012/19/EU Waste of Electrical and Electronic Equipment Directive Disposal Information-
Do not dispose this device and contained batteries with the general household waste. For proper treatment, recovery and recycling, please take the device and contained batteries to designated collection points. Disposing of this device and of contained batteries correctly will help save valuable resources and prevent any potential negative effects on human health and the environment, which could otherwise arise from inappropriate waste handling.

Installation Setup



ISU Code	Description	Possible Options
1	System Type	0 Heat only 1 Cool only 2 Two pipes heating/cooling (Default)
2	Remote Sensor	0 Temperature Sensor - Onboard Sensor (Default) RSB - Button (Default) 1 Temperature Sensor - Remote Sensor (RSB is set to Button as default) 2 RSB - Hotel Card NO (Temperature Sensor is set to Onboard Sensor as default) 3 RSB - Hotel Card NC (Temperature Sensor is set to Onboard Sensor as default)
3	Temperature Scale	0 °F 1 °C (Default)
4	Fan Control Type	0 Auto only Auto has fan ramping algorithm 1 Manual only (3 speed: Low->Med->High-> Low) 2 User can choose Auto or Manual (Default) (Low->Med->High->Auto-> Low)

ISU Code	Description	Possible Options
8	Display Temperature Adjustment	-2 °C- 2 °C, step 0.5 °C, Default 0 °C (-4 °F- 4 °F, step 1 °F, Default 0 °F)
9	Temperature Display Mode	0 Display room temperature (Default) 1 Display setpoint
10	Heating Range Stops	10-32 °C Default 32 °C (50-90°F Default 90 °F)
11	Cooling Range Stops	10-32°C Default 10 °C (50-90°F Default 50 °F)
12	Keypad Lockout	0 All keys are available (Default) 1 System button locked out 2 Fan and System buttons locked out 3 All buttons locked out except power button 4 All buttons are locked
14	Remote Setback Heating Setpoint	Range 10-21°C Default : 18 °C (Range 50-70°F Default : 64 °F)

ISU Code	Description	Possible Options
15	Remote Setback Cooling Setpoint	Range 22-32°C Default : 26 °C (Range 72-90 °F Default : 79 °F)
16	Freeze Protection	0 Disabled 1 Enabled (Default)
17	Power Recovery Status	0 OFF 1 Previous status (Default)
19	Fan Mode In ES Mode	0 Run as Auto fan speed when ISU_4=2 (Default) 1 Run as Low fan speed when ISU_4=2